



**MOLECULAR DIAGNOSTICS:
immunetechniques and molecular biology
methods in routine laboratory**

- Multiplex immunological methods

Timea Berki MD, PhD

Multiplex immunoserological methods

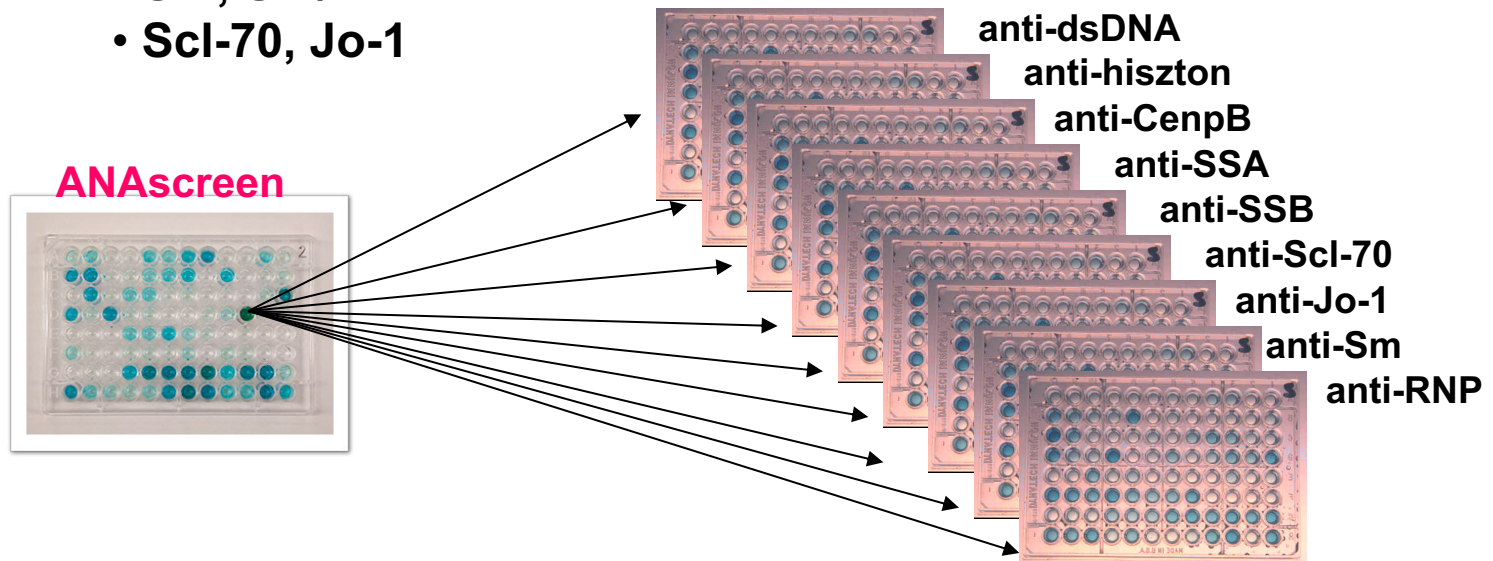
1. **Microbead based methods:** - Flow cytometry
 - Becton Dickinson
 - Bender MedSystem
 - Luminex platform
2. **Protein chip methods: „microarray“:** - chip reader
 - glass
 - plastic
 - silica
 - nano-well

ANAscreen on microplate ELISA

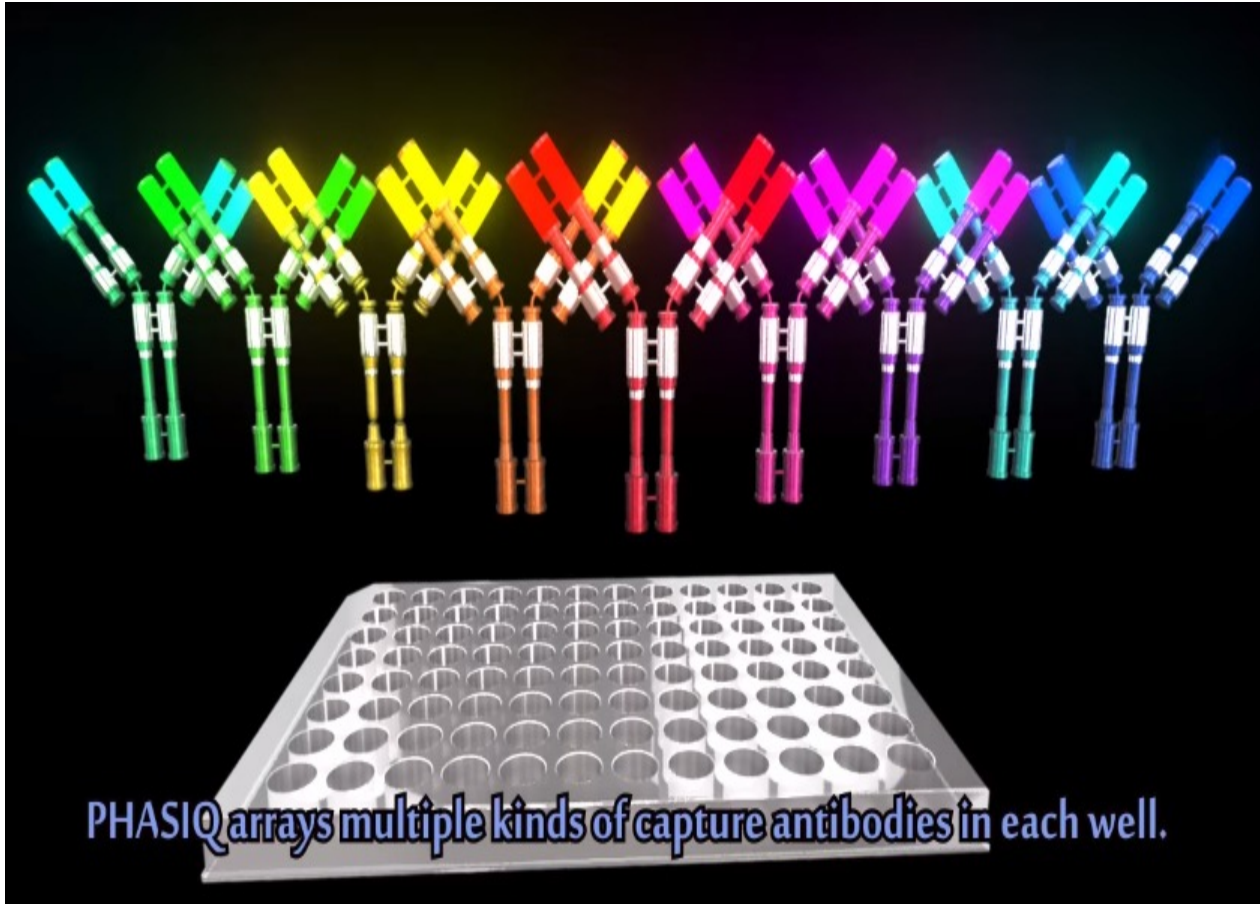
Az ELISA lemezt Hep2 sejtek magjából kivont antigének keverékével érzékenyítik:

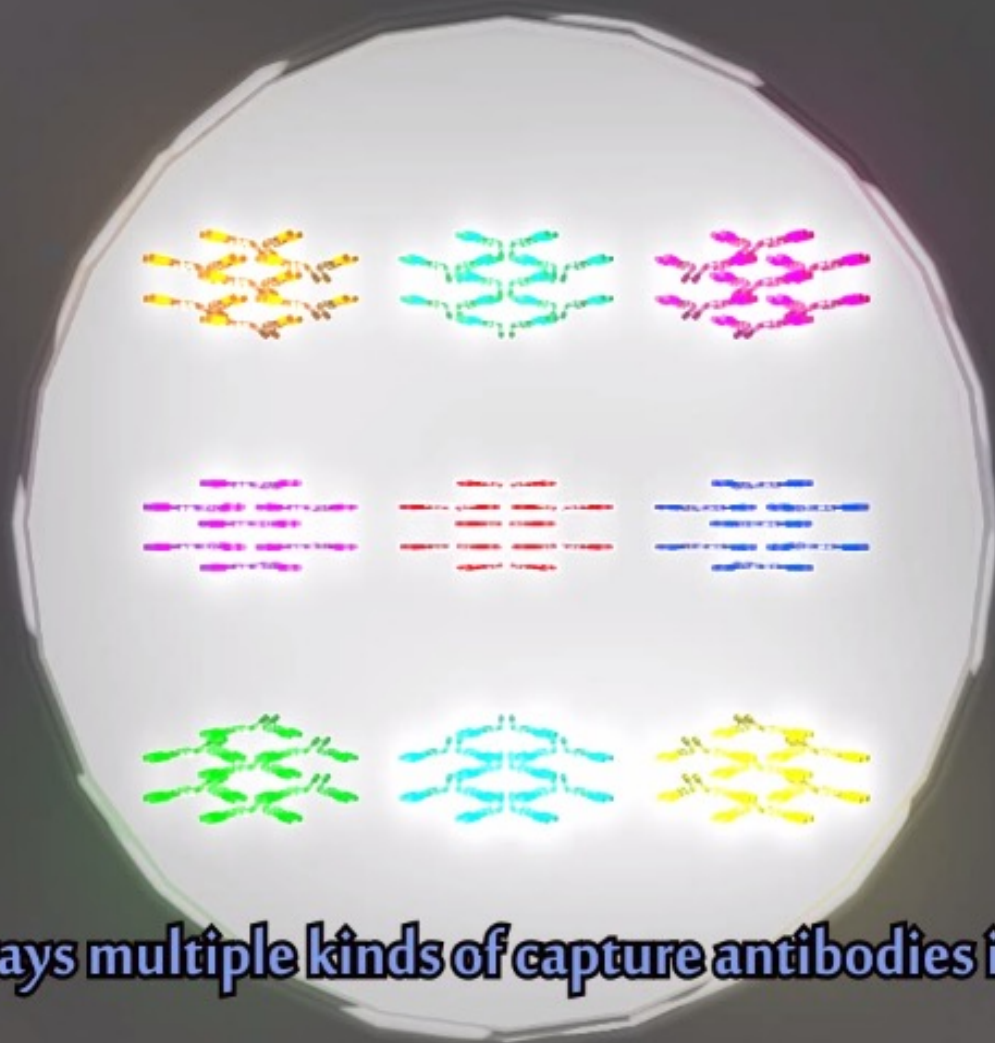
- dsDNA
- hiszton
- centromer
- SSA/Ro, SSB/La
- Sm, Sm/RNP
- Scl-70, Jo-1

Pozitivitás esetén egy-egy antigénnel fedett külön ELISA lemezeken un. „kifejtő” vizsgálatok következnek

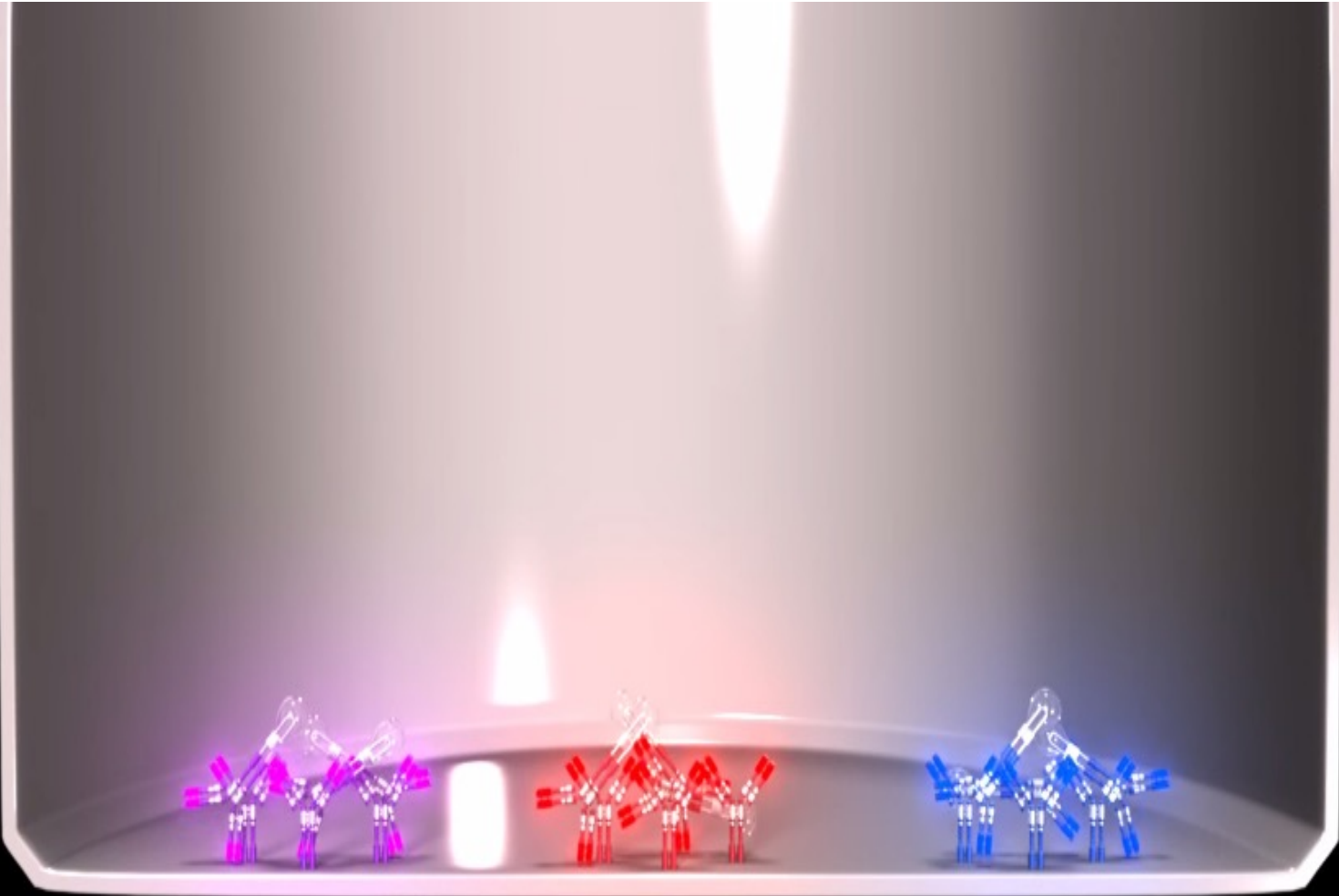


Multiplex sandwich ELISA

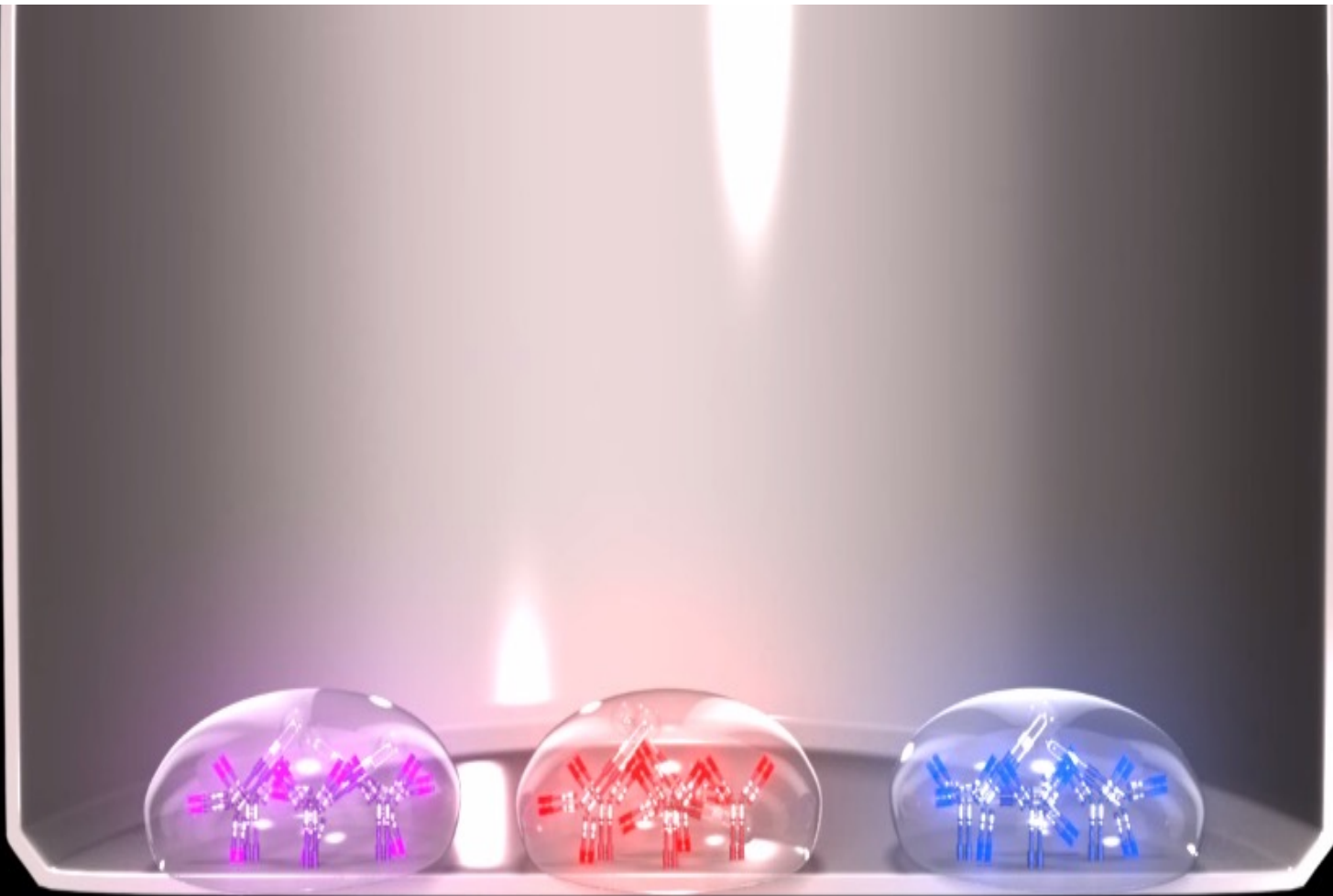




PHASIQ arrays multiple kinds of capture antibodies in each well.



PHASIQ also pre-arrays the corresponding detection antibodies



together with proprietary polymers.

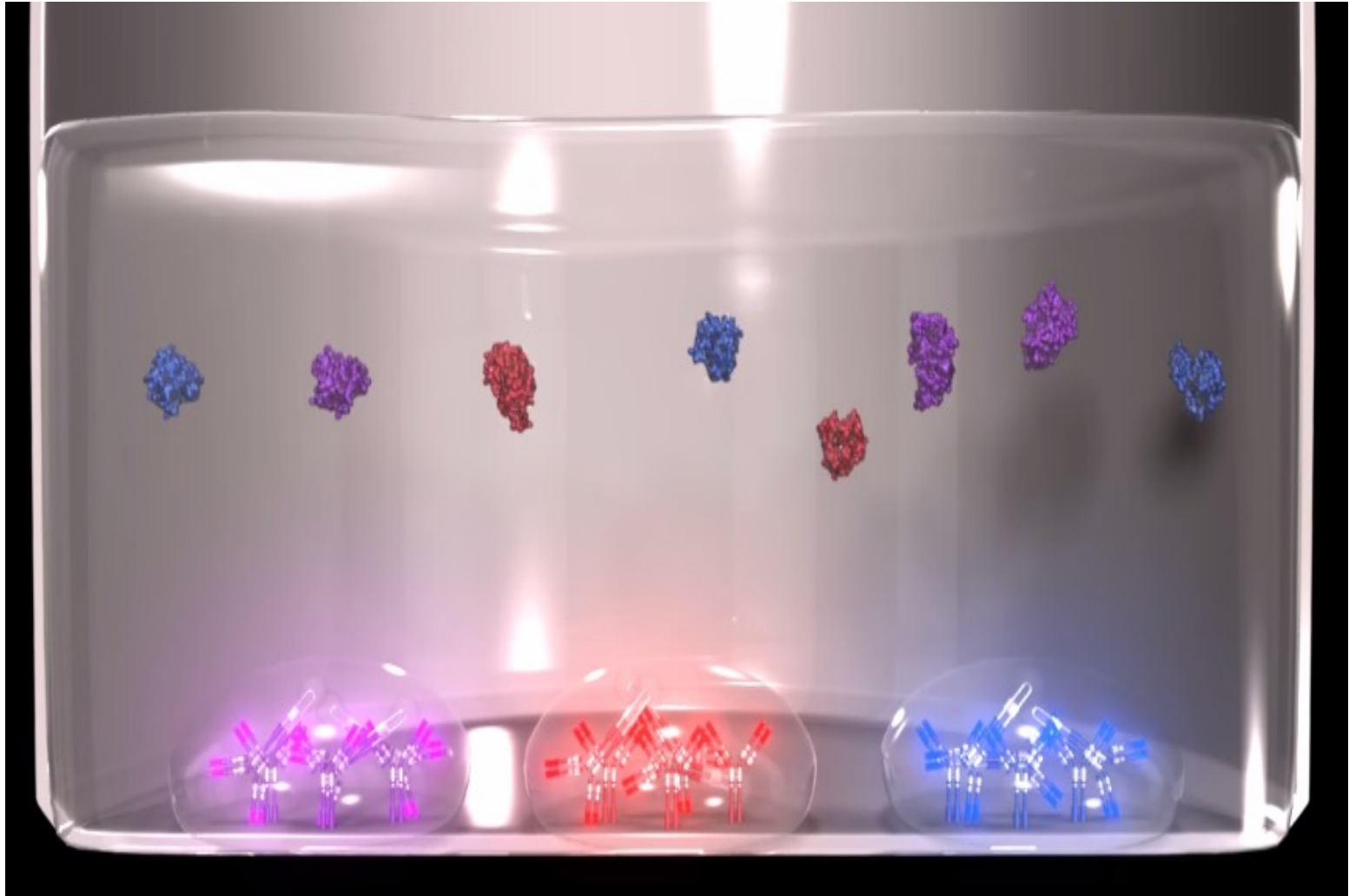


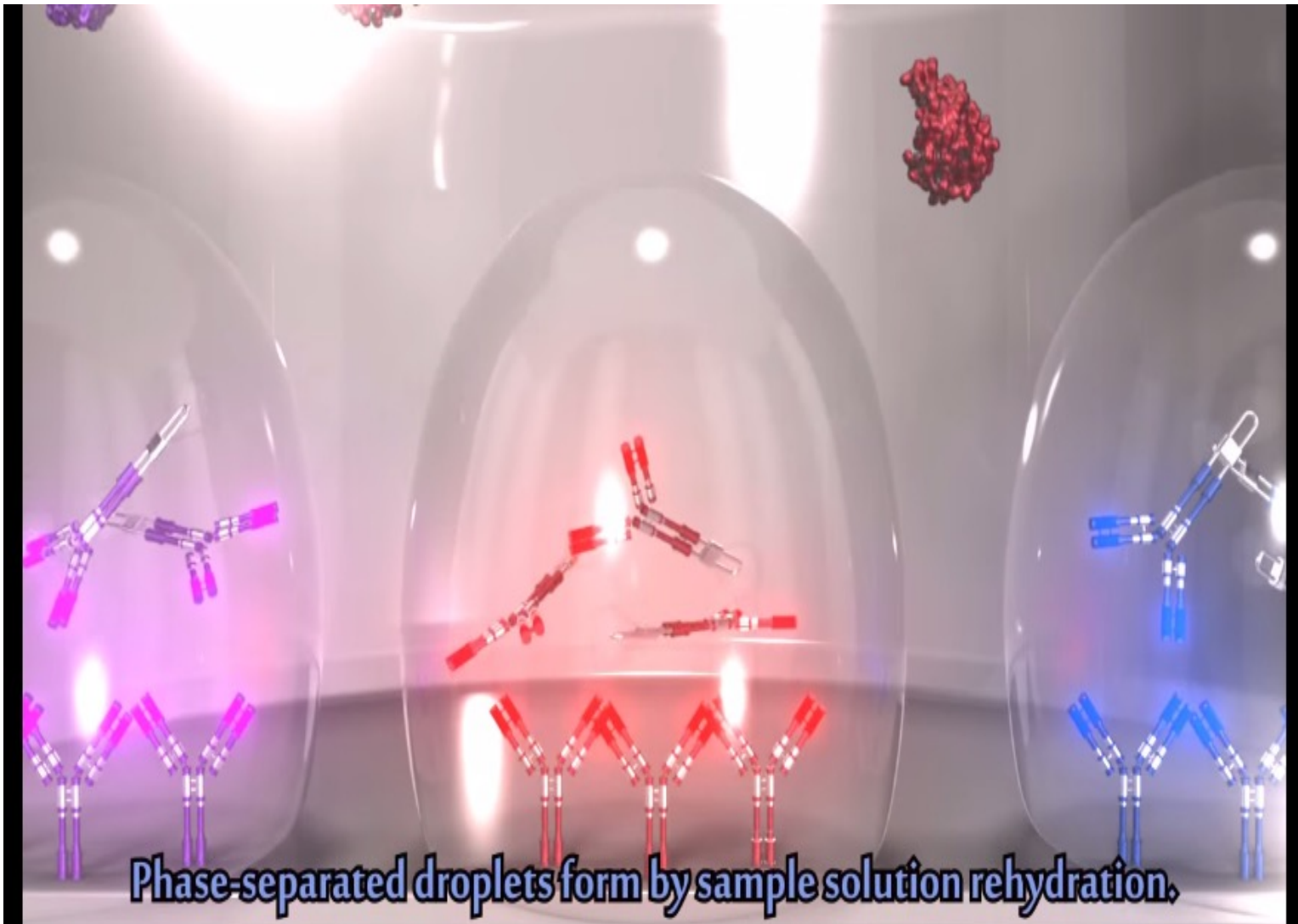
Sample



PHASIQ diluent

Mix sample with PHASIQ diluent.

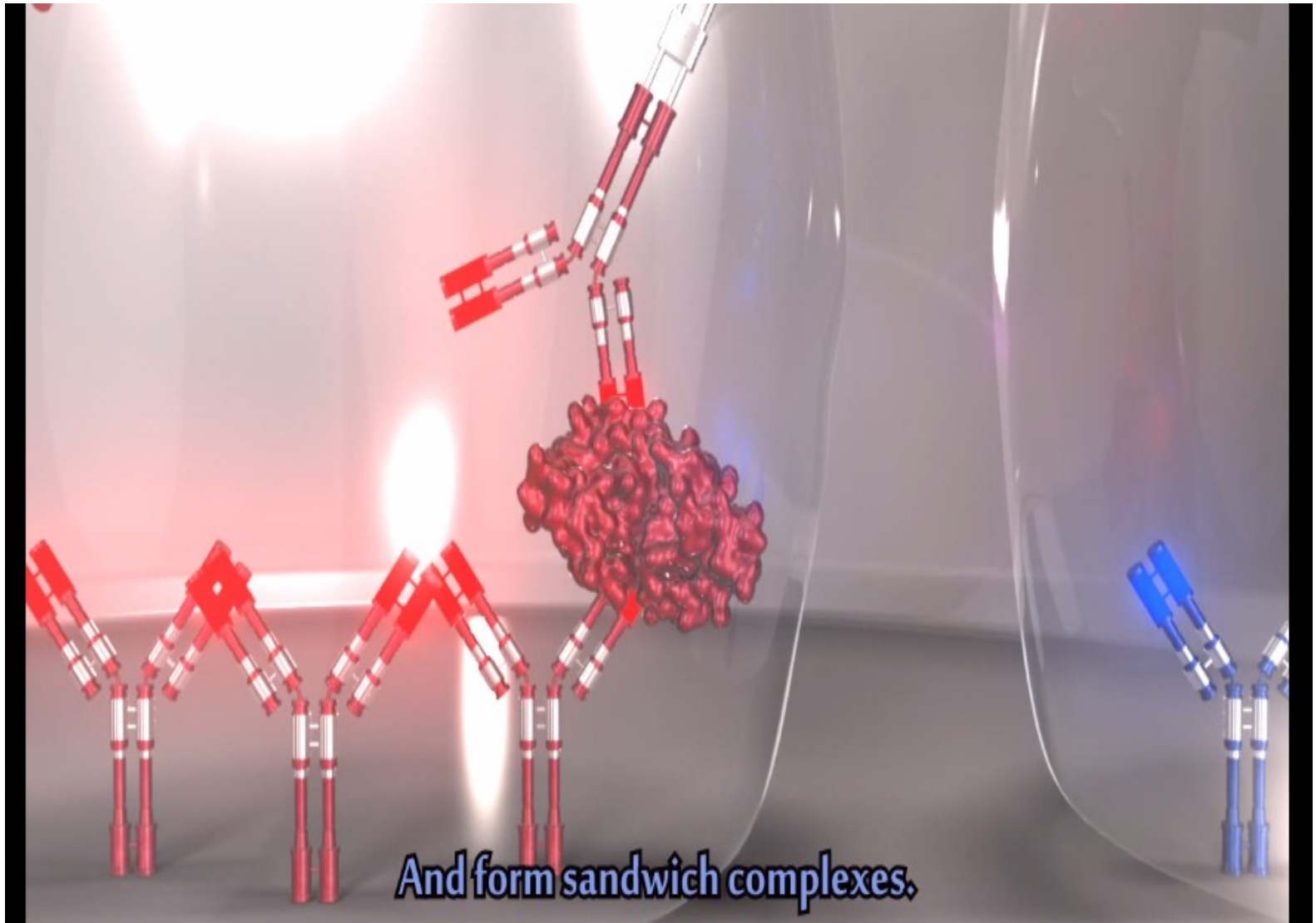




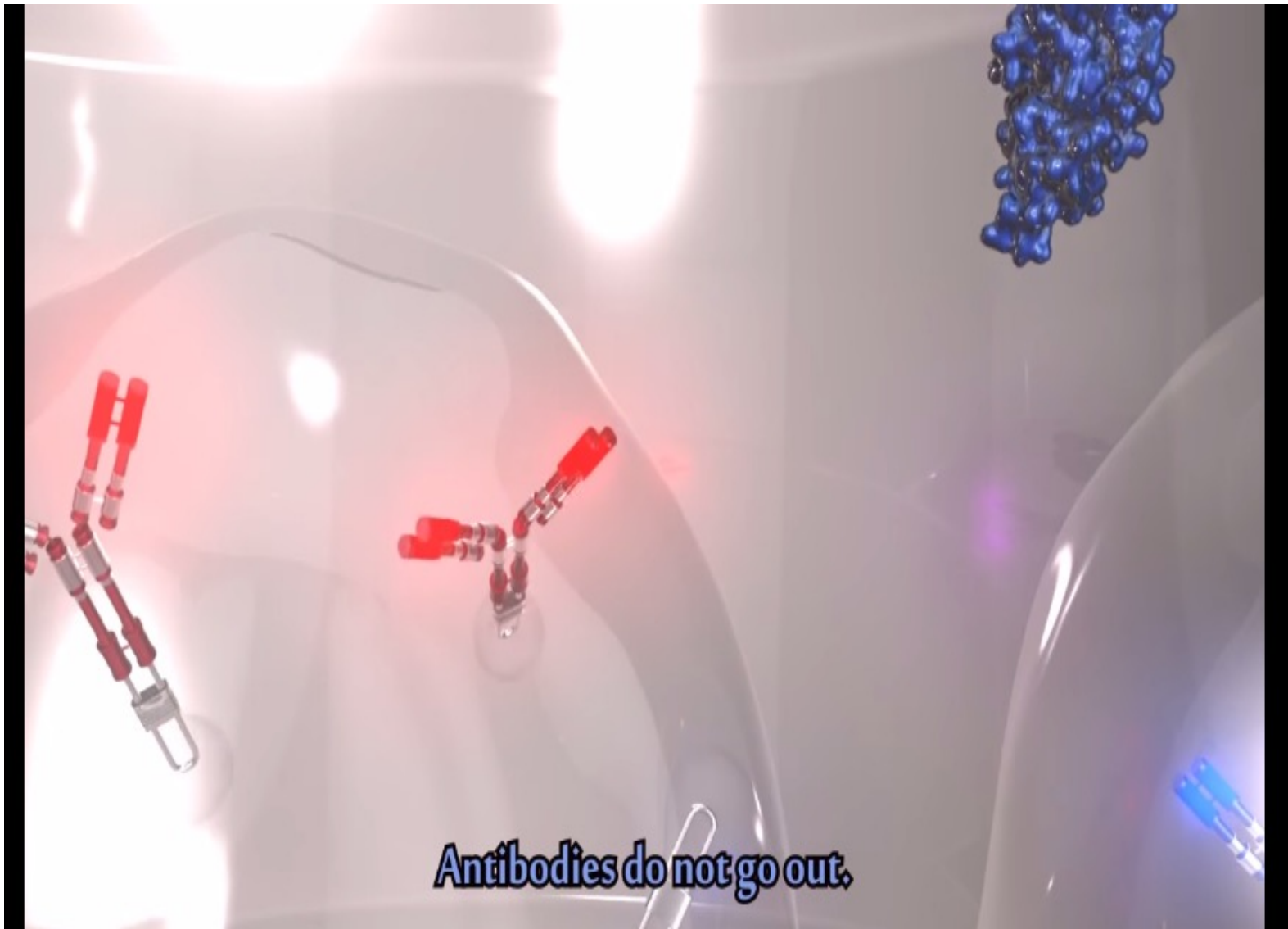
Phase-separated droplets form by sample solution rehydration.



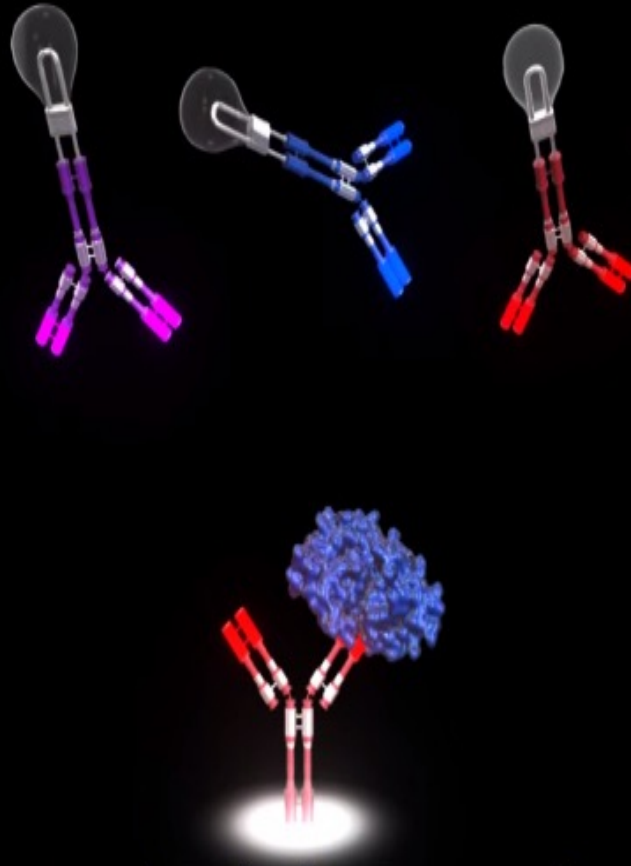
Antigens enter droplets freely.



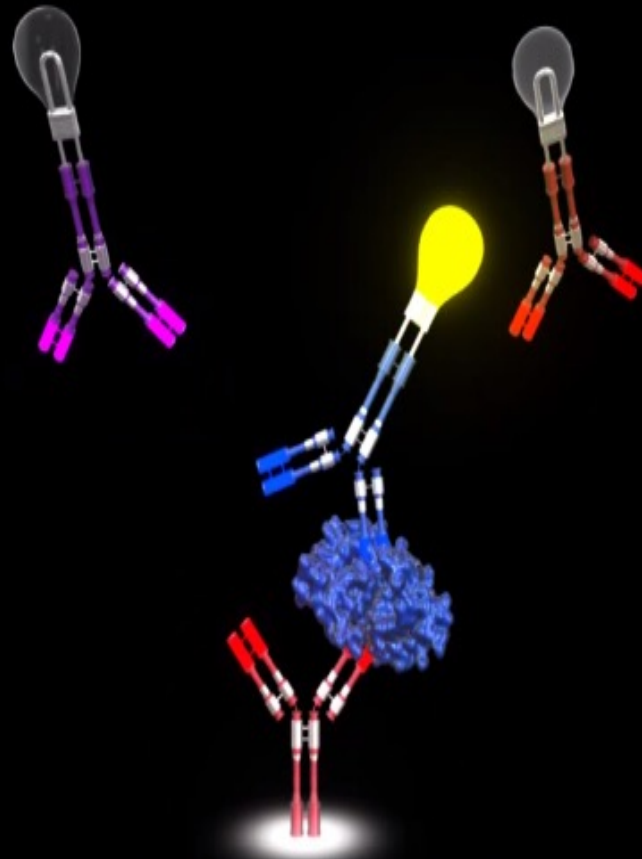
And form sandwich complexes.



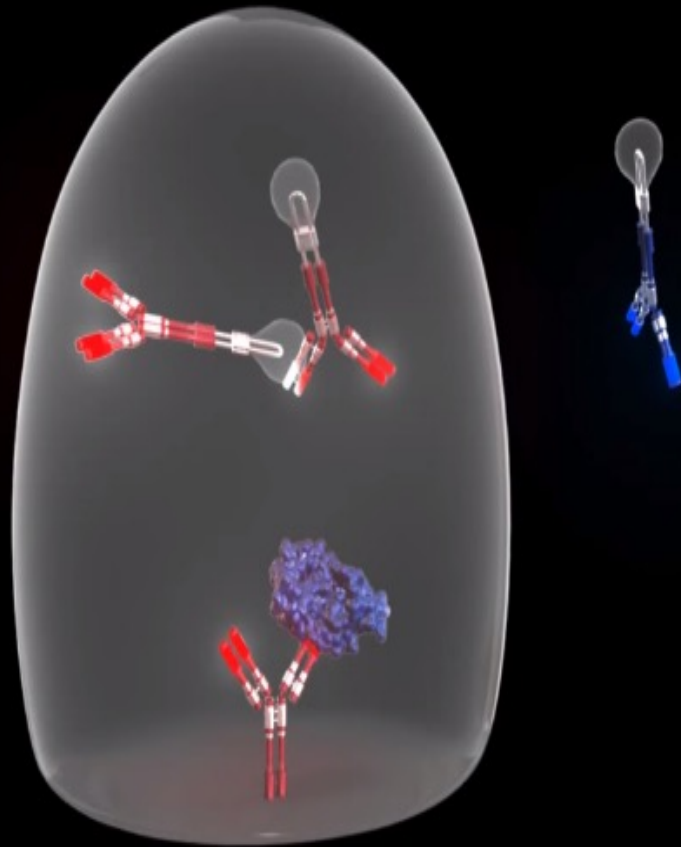
Antibodies do not go out.



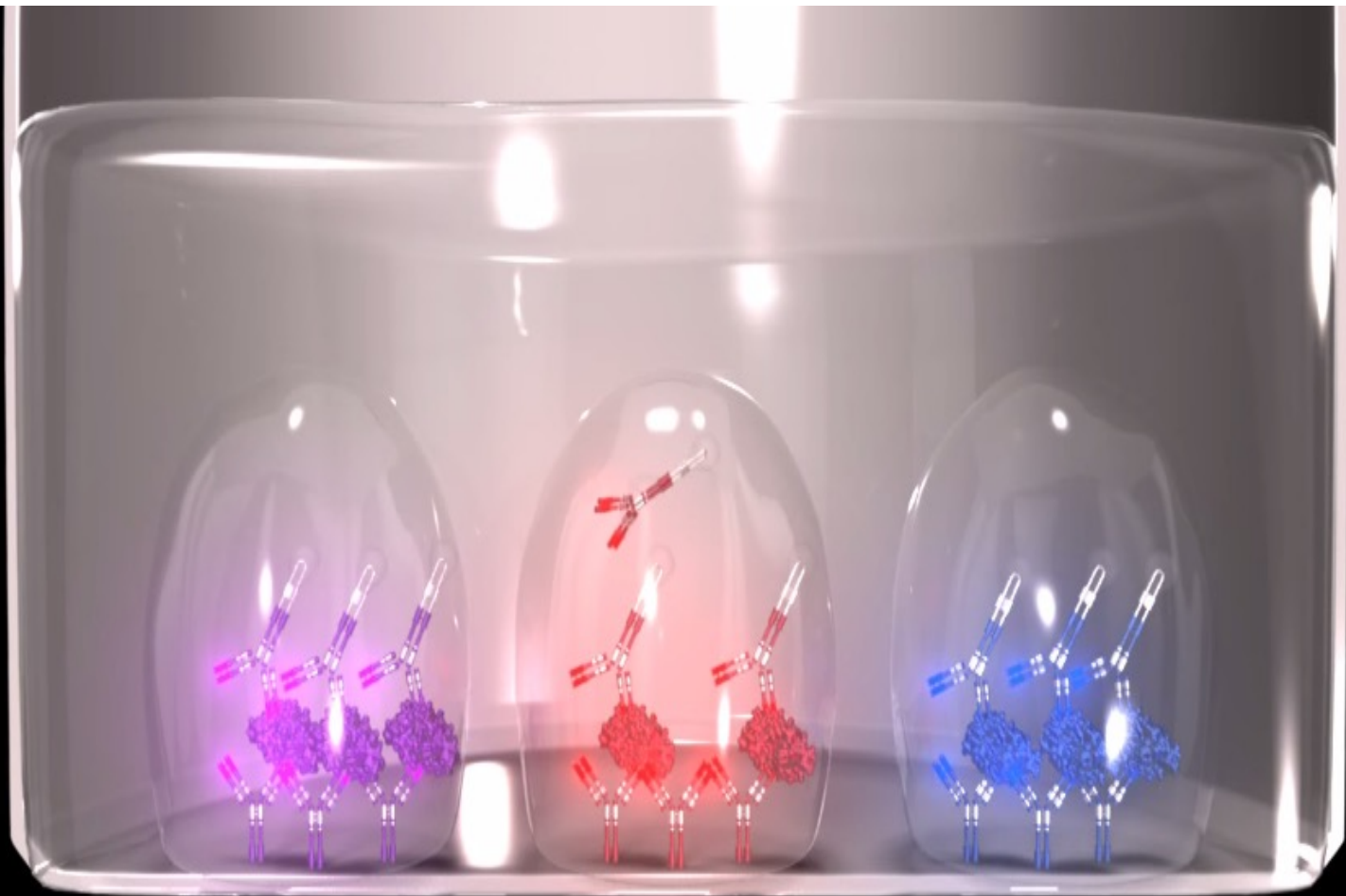
In ELISA, a portion of antibodies capture the wrong antigen



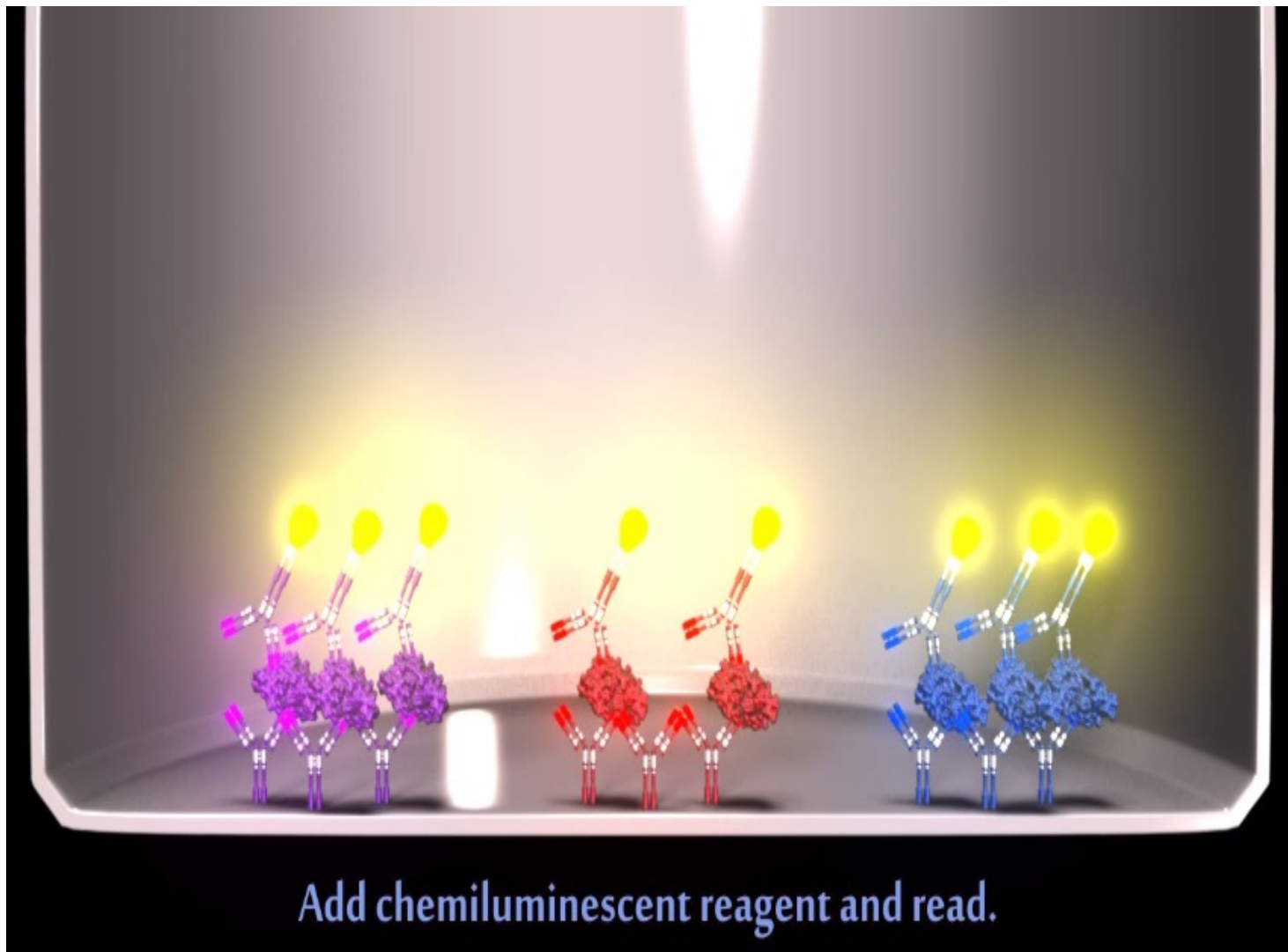
and give false positive signals if miss-matched DT antibodies also bind to it.



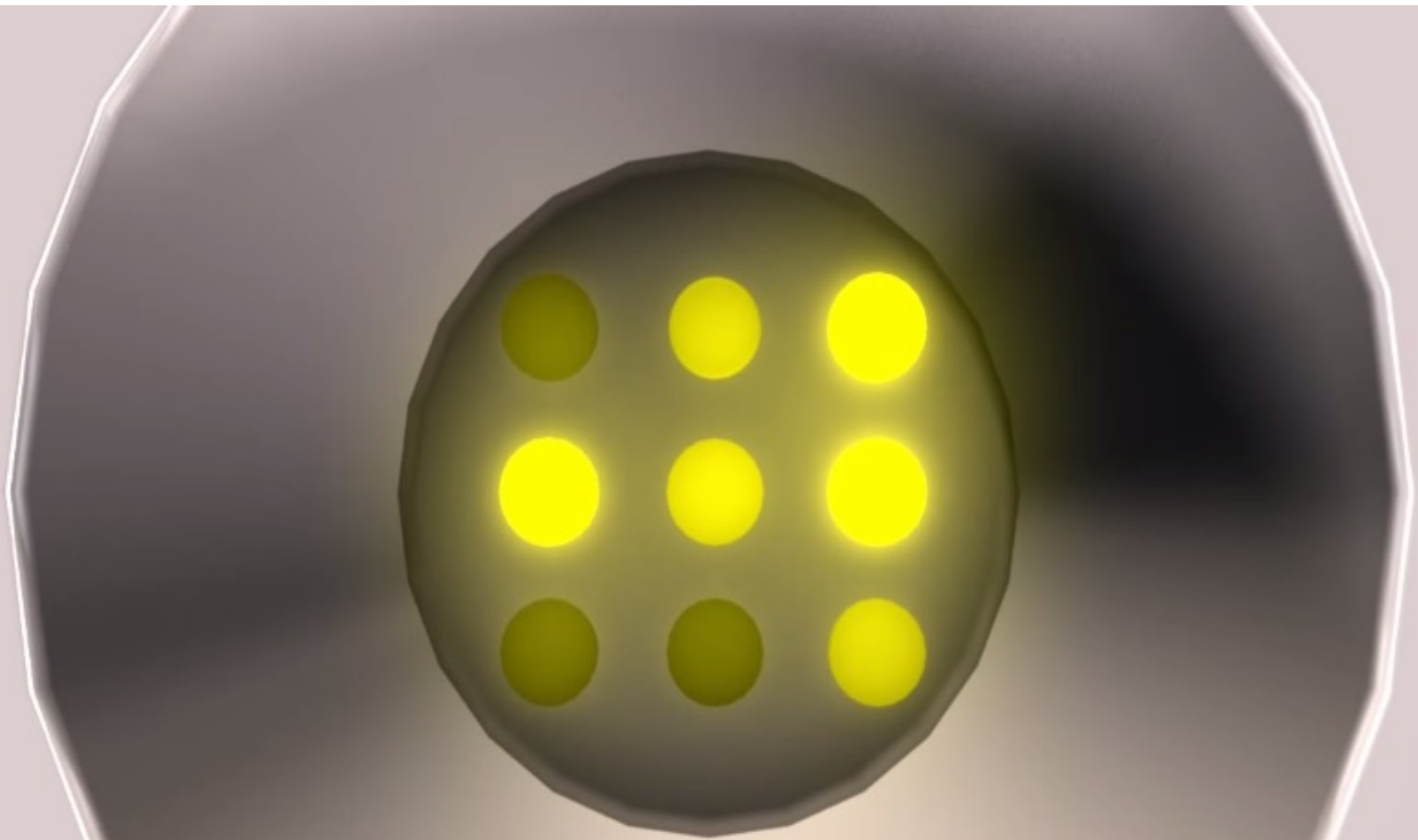
In PHASIQ assays, phase-separated droplets prevent such cross-reactions.



After sandwich complex formation, wash away unbound material.



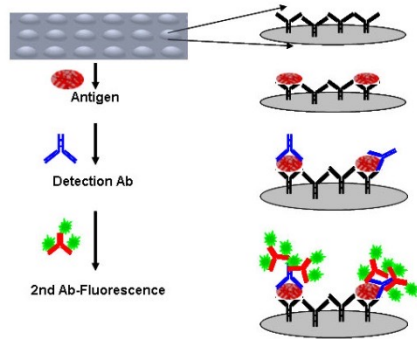
Add chemiluminescent reagent and read.



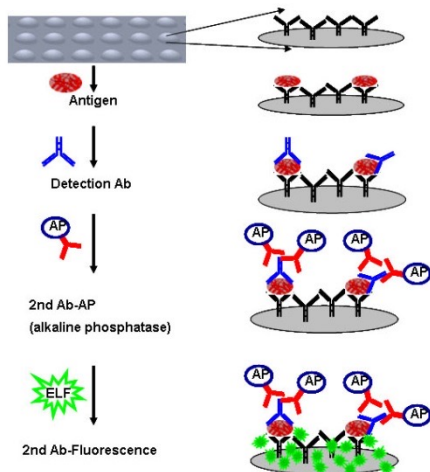
Multiple analytes quantified per well.

Antibody microarray

Fluorescence-linked Immunosorbent Assay

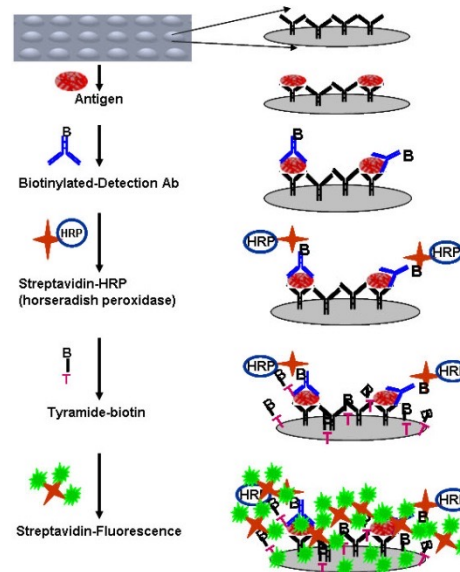


Enzyme-linked Immunosorbent Assay (ELISA) Using insoluble fluorescence dye

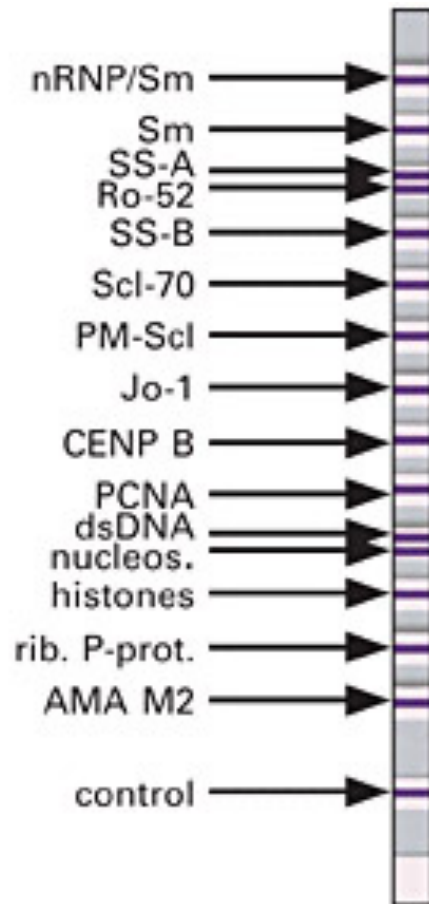


A few ways to create and detect antibody microarrays

Enzyme-linked Immunosorbent Assay (ELISA) Using Tyramide Signal Amplification (TSA) technology



Multiplex ANA-Profile Immunoblot

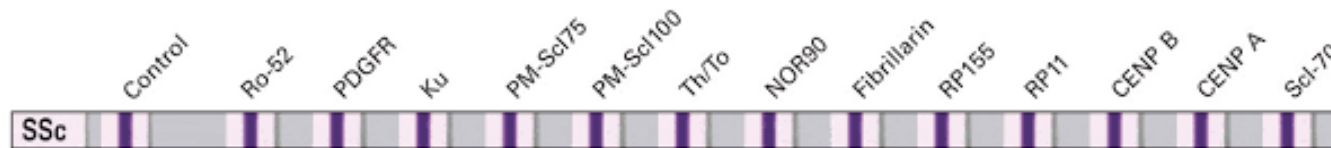


its advantage: - 1 sample 1 run
- fast

disadvantage:

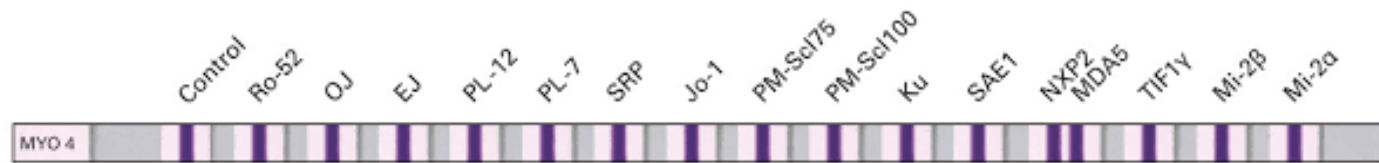
- antigen is denatured, the conformation is different than that in ELISA
- false-negative reactions
- some antigens cannot be investigated

Systemic sclerosis profile IgG – EUROLINE



- **Sci-70** – DNA-topoisomerase I – purified protein, 65% sensitivity, specific for dcSSc
- **CENP A és CENP B** - centromer A an B recombinant protein. 11-13 % sensitivity 80-95% specificity in lcSSc.
- **RNS polimeráz III: RP11 and RP155** recombinant proteins in dcSSc 5-22 %
- **Fibrillarin -U3-RNP**. In dcSSc with internal organ involvement (pulmonary hypertonia, myositis and kidney).
- **NOR90** - nucleolus-organising region 90kDA <5% + in SSc.
- **Th/To** - 7-2-RNP/7-2-RNA protein complex. >5% + in SSc
- **PM-Scl komplex** PM-Scl100 és PM-Scl75: 10-12% + in SSc indicates pulmonary and joint involvement.
- **KU**: <5% when overlapping polymyositis exists with primer pulmonaris hypertonia.
- **PDGFR** – platelet derived growth factor receptor rekombinánt.
- **Ro-52** - 52 KDa-os component of Ro rekombináns. Nem SSc specifikus, más autoimmun betegségekben pl. Sjögren, SLE, MCTD AIHepatitisben és infekciókban is pozitív lehet

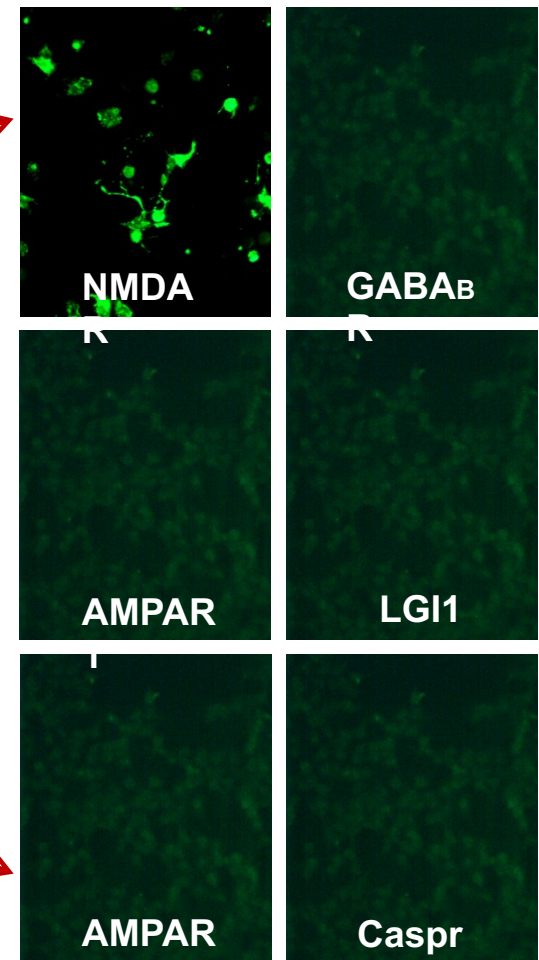
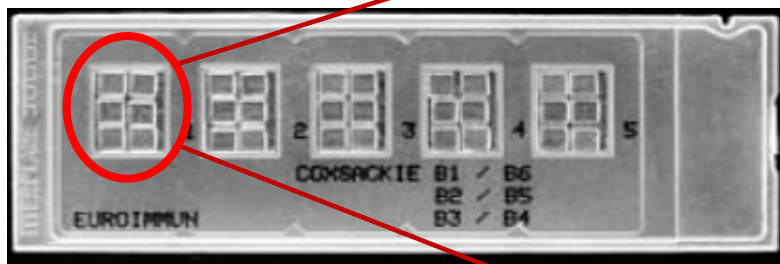
Autoimmune myositis diagnostics - EUROLINE



- Dermato- és polymyositis
- Idiopathic myositis
- Anti-synthase syndrome
- Inclusion body myositis
- Overlap syndrome
- Some can associate with lung, breast or colon cc

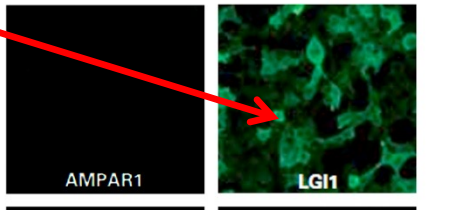
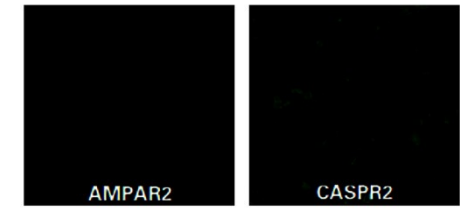
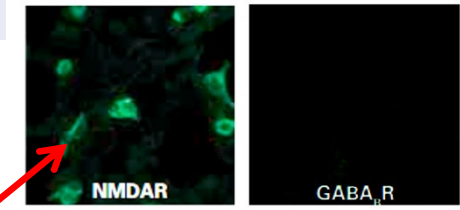
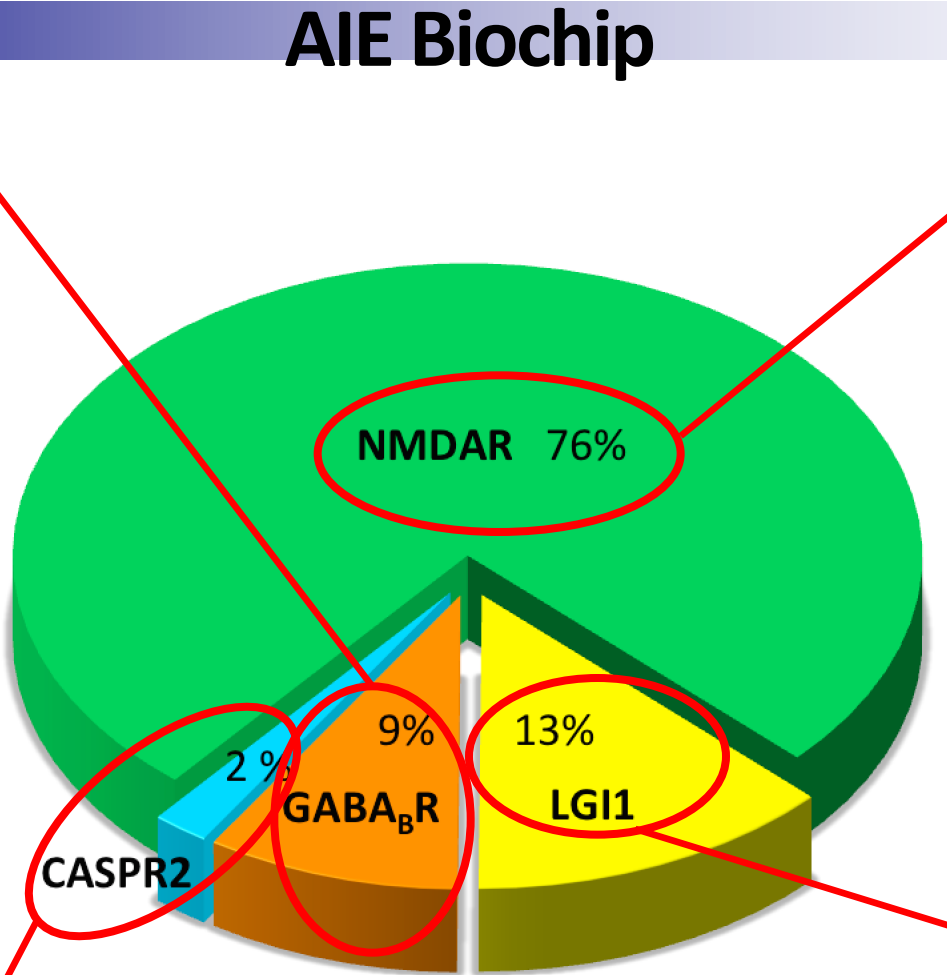
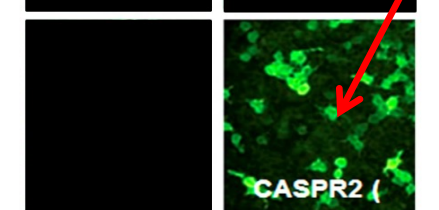
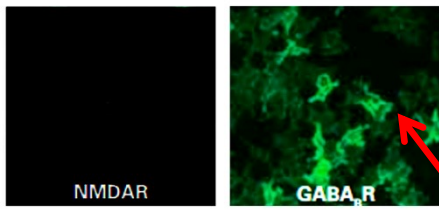
Diagnostics of autoimmune encephalitis: Cell-based indirect immunofluorescent BIOCHIP assay

1. Incubation of patients sera (1:10x) or liquor (1:1) on a biochip surface
2. anti-human IgG-FITC secondary antibody
3. Microscopic evaluation



On the biochip on each place HEK293 cells are immobilized each transfected with the gene of a different CNS receptor

AIE Biochip

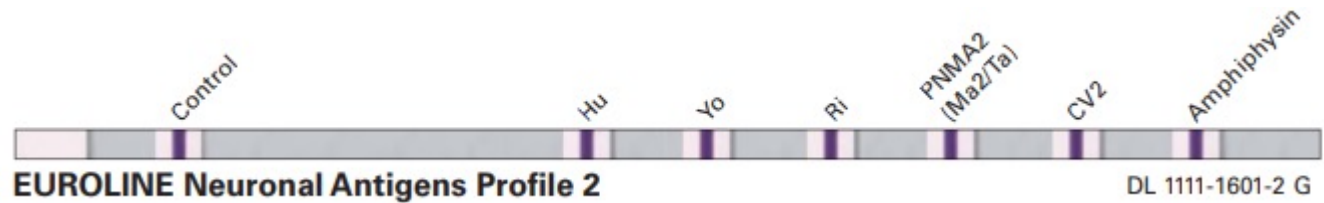


Total demands (2011.06.30.-2017.08.08.)	836	
Petiens number	717	100%
Positivity (n=)	54	7,53%

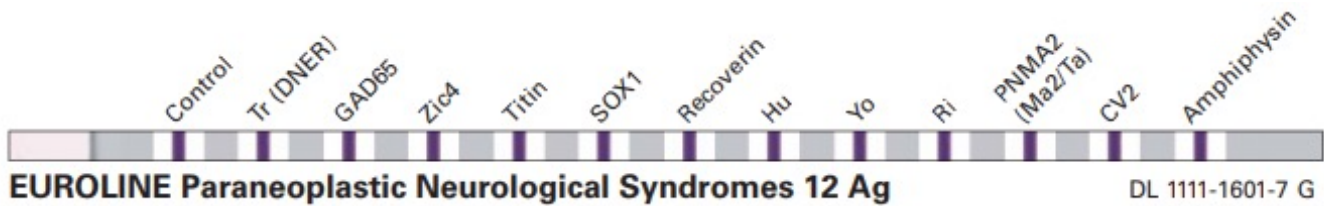
A többi receptor ellen nem találtunk pozitív mintát.

Line-immunoblot for detection of onconeural antibodies

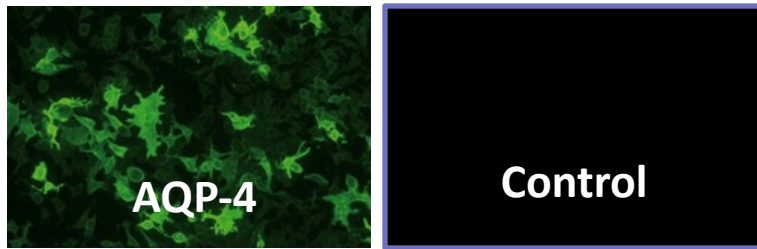
6 antigén



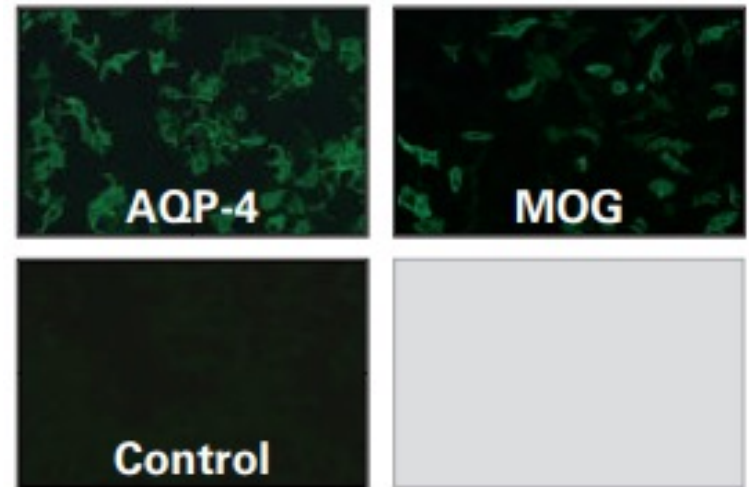
12 antigén



Neuromyelitis optica spectrum disease (NMOSD)



ANTI-AQP4 MOSAIC IIF TEST



NMOSD SCREEN 1

CombiChip Autoimmune 1.0

FOR DIAGNOSIS OF THE AUTOIMMUNE DISEASES VASCULITIS & COLLAGENOSIS

- Simultaneous quantitative analysis of 14 autoantibodies
- Easy as an ELISA test
- Up to 64 samples in one working cycle



Antigen Array



FAST® Slide Surface

Detection

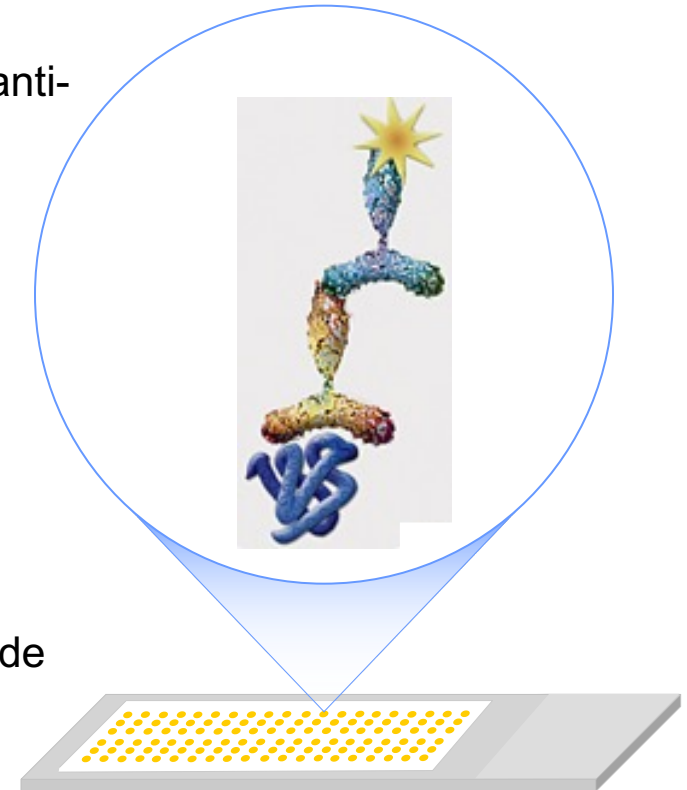
fluorophor-labelled anti-IgG antibody binds

Serum-Incubation

auto-antibody binds to antigen

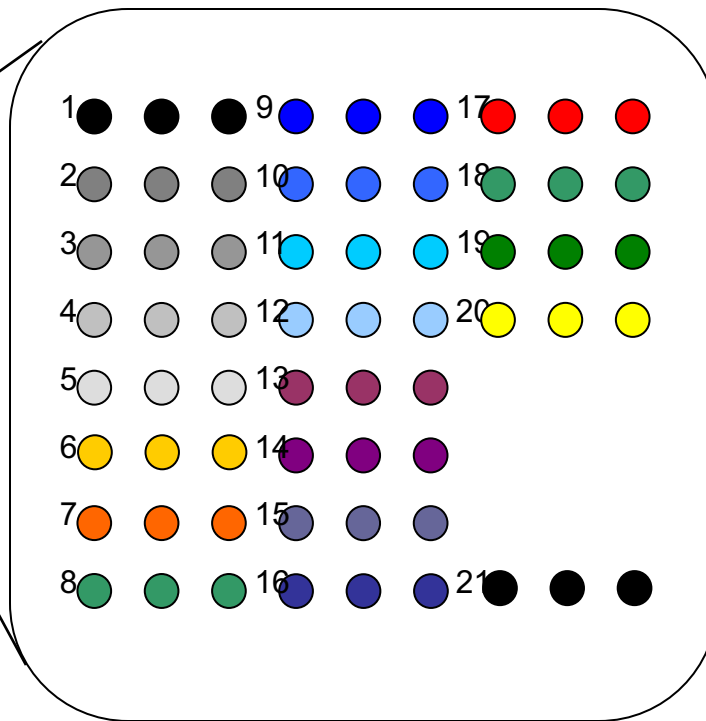
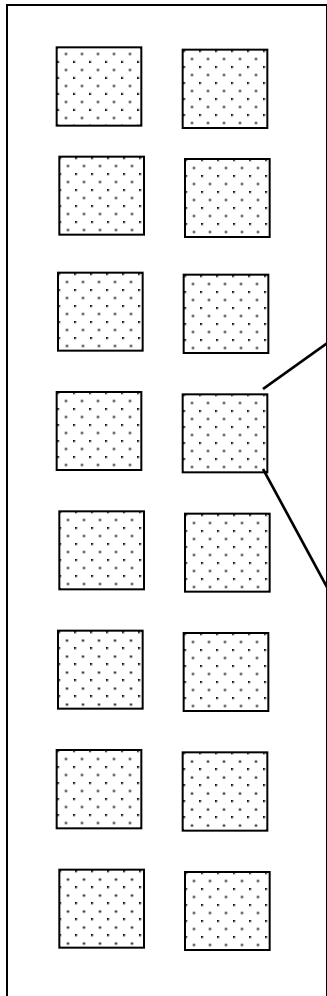
Printing

antigen on FAST Slide



CombiChip Autoimmune 1.0 Layout

14 Collagenosis & Vasculitis-related autoimmune disease antigens, clinically validated & accepted

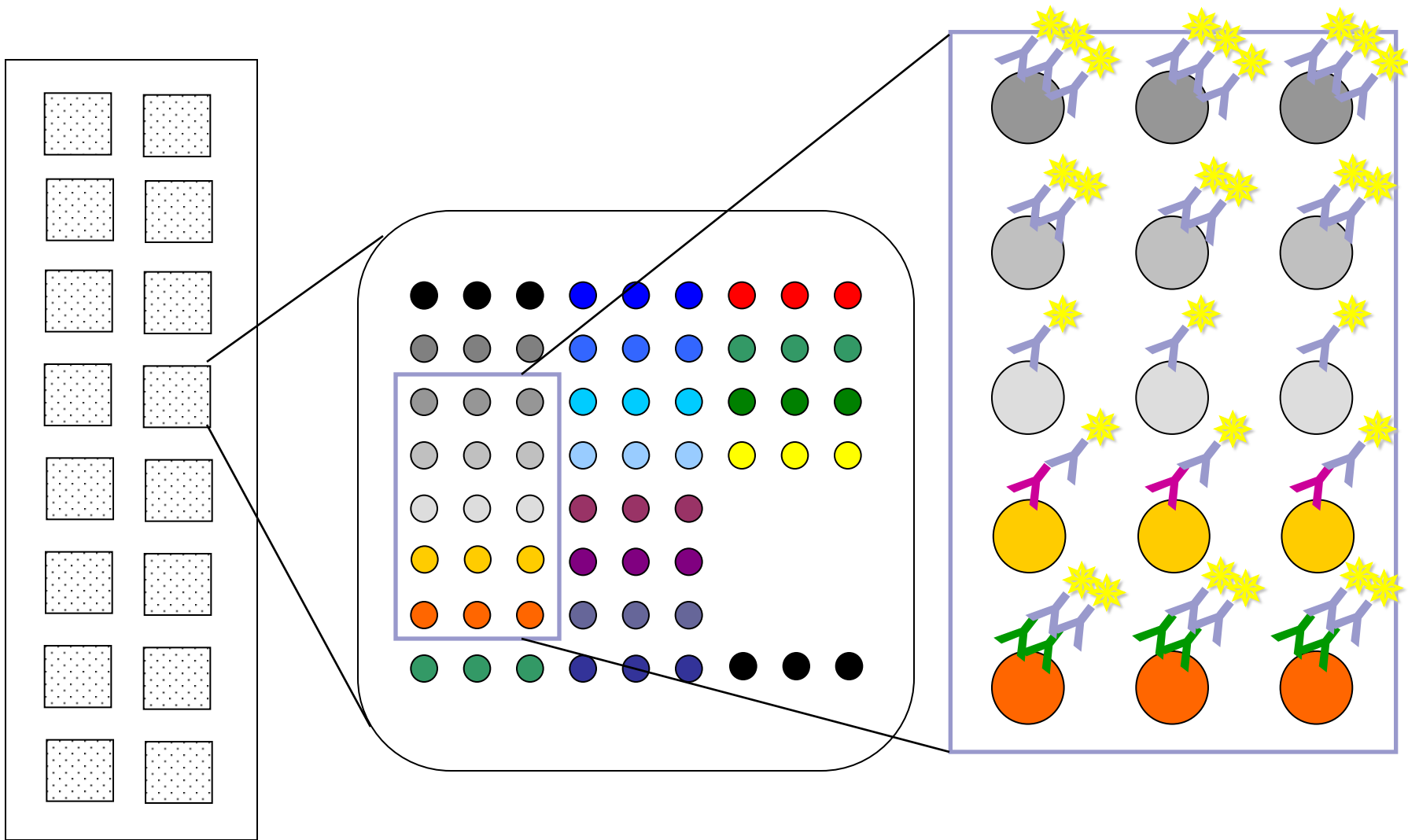


pad size 6 x 6 mm

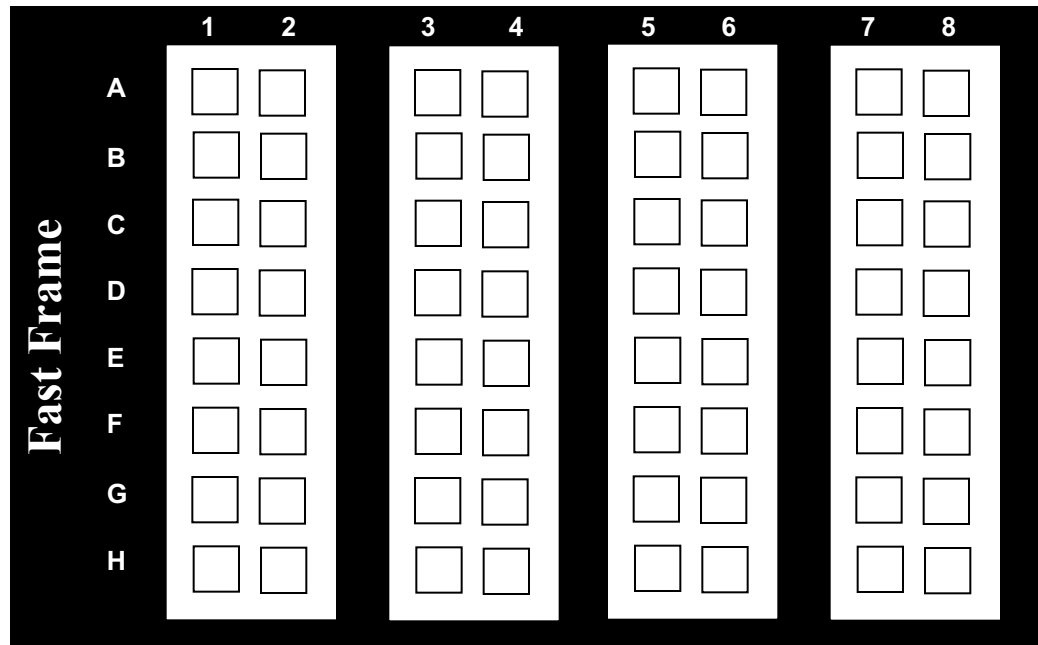
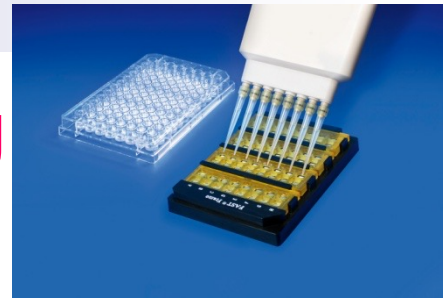
- 1-5 = calibrator***
- 6 = CENP-B
- 7 = U1-70k
- 8 = Sm
- 9 = SSA/Ro52
- 10 = SSA/Ro60
- 11 = SSB/La
- 12 = Mi-2
- 13 = PM/Scl-75
- 14 = PM/Scl-100
- 15 = Jo-1
- 16 = Scl-70
- 17 = Pr3
- 18 = MPO
- 19 = dsDNA
- 20 = buffer
- 21 = "Landing Lights"
(= positive assay control)

* patent pending

CombiChip Autoimmune Assay



Microplate-like Liquid Handling



Process up to 4 slides with 64 identical arrays

To process up to 64 different patient samples at once

CombiChip Autoimmune 1.0 Scan

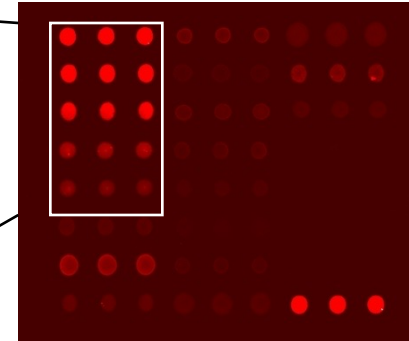


Eredmény:

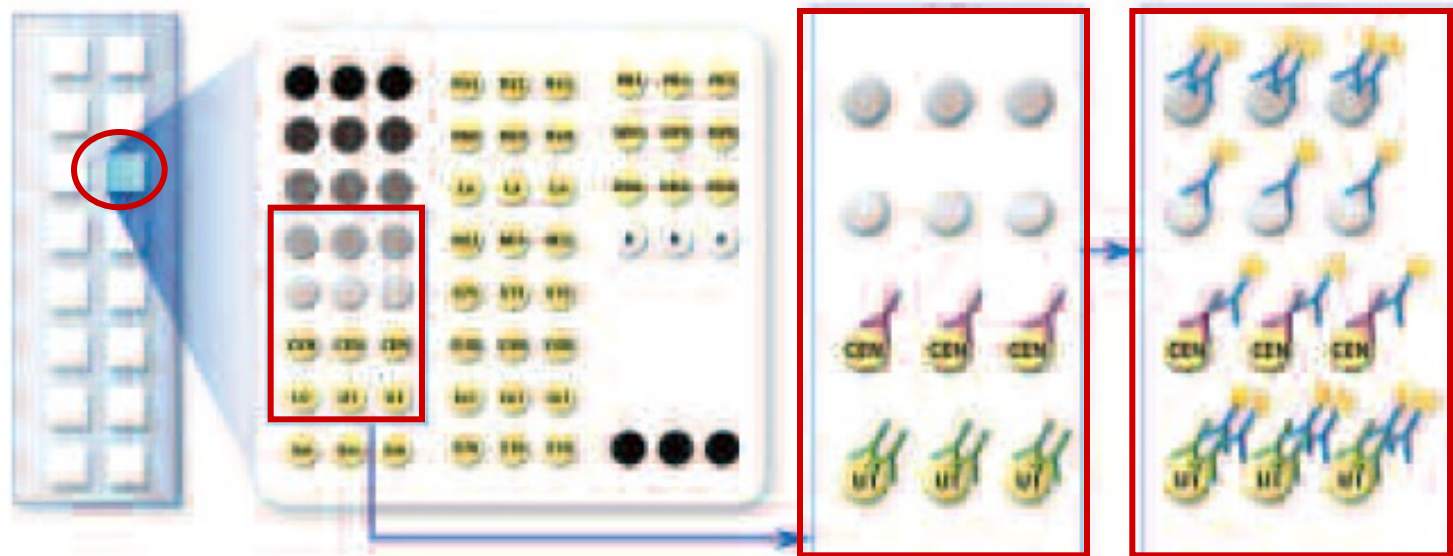
**16-bit Greyscale Digital Image
(tiff-Format)**

Kalibráció:

IgG [mg/ml]
0,500
0,250
0,125
0,062
0,031



Fluorescent CombiChip



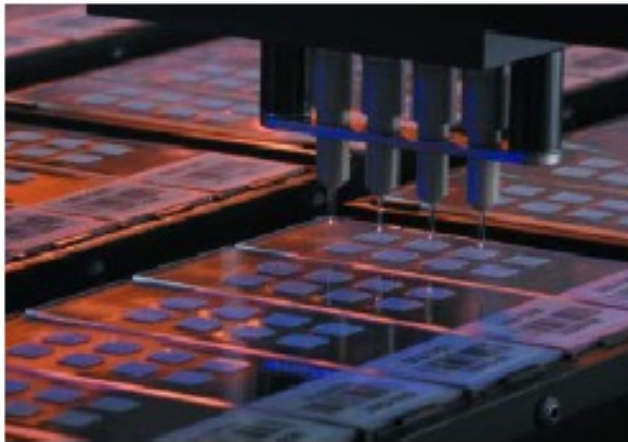
70 μ l of diluted sample (1:100) is incubated on each array pad.

Step A	The reactive autoantibodies bind to their specific antigen
Step B	Anti-human IgG conjugate binds to human IgG antibodies, including the calibrator curve consisting of human IgG

CombiChip is then scanned in a fluorescent imager, and data are analyzed.

Whatman®
Schleicher & Schuell

... weltweit führend für Protein Biochips



Protein microarray attachment methods

Requirements: Strong binding, retention of function, high signal:noise, low background

Diffusion,
e.g. polyacrylamide gel
(Hydrogel), agarose

No protein modification, high capacity,
low background, random orientation

Surface adsorption
e.g. PVDF, Nitrocellulose
Poly-L-lysine

Protein denaturation, high capacity,
variable background, random orientation

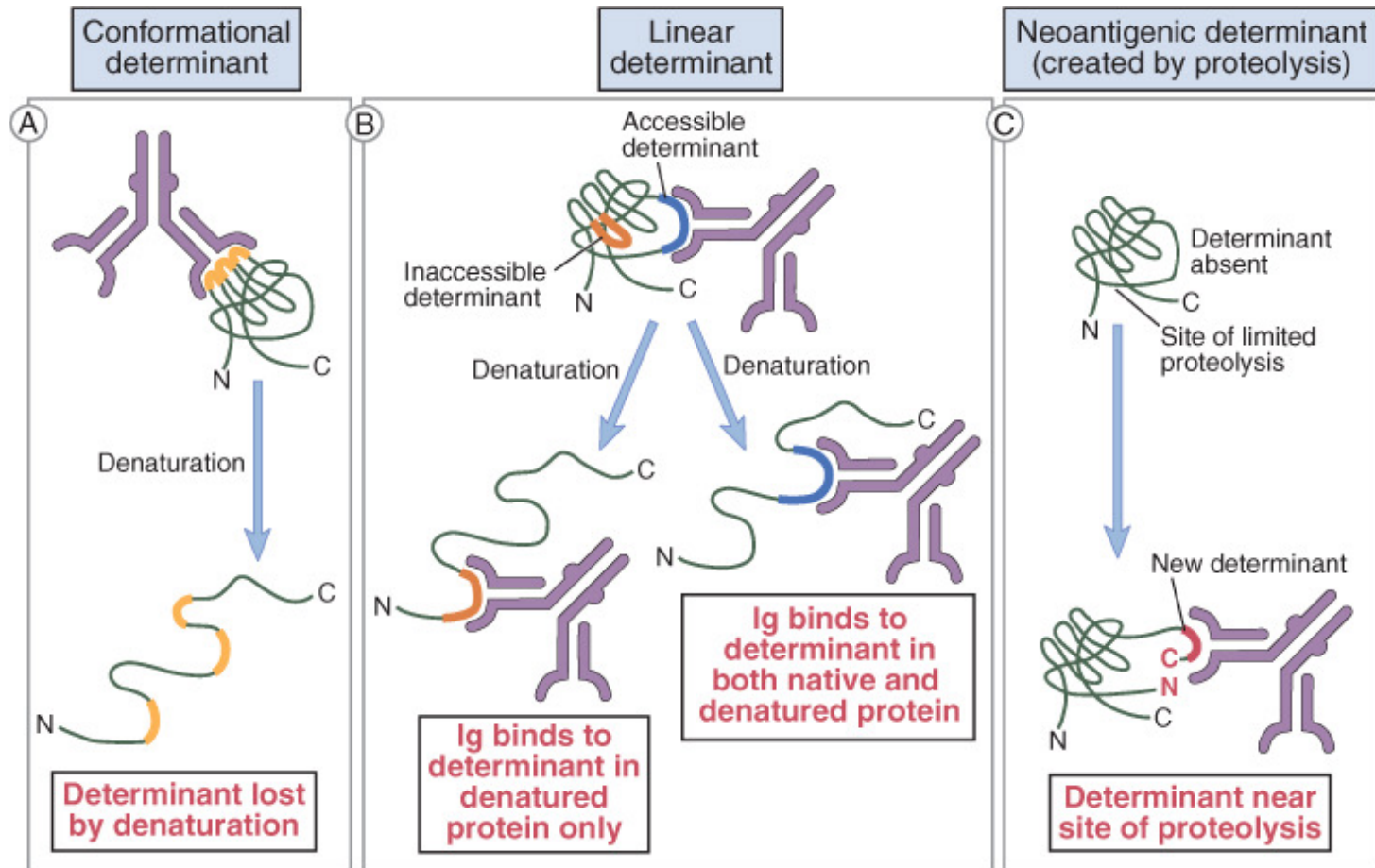
Covalent
e.g. Silanes (various)
aldehyde

Protein modified, strong attachment,
high sensitivity, random or uniform
orientation

Affinity
Biotin/Streptavidin,
His/Ni-NTA

Protein modified, strong attachment,
low background, random or uniform
orientation

Antigen determinants



Multiplex microbead array (MMA)

Pre-wet plate.

Add 25 μ L Antibody Coated Beads

wash 2x

*Sample Type: Standard/Control/
Tissue Culture Supernatant*

Add 50 μ L Incubation Buffer

Add 100 μ L Sample Type

or

Sample Type: Serum/Plasma

Add 50 μ L Incubation Buffer

Add 50 μ L Standard Diluent Buffer

Add 50 μ L Sample

shake for 2 hours at RT in the dark
wash 2x

Add 100 μ L Biotinylated Antibody

shake for 1 hour at RT in the dark
wash 2x

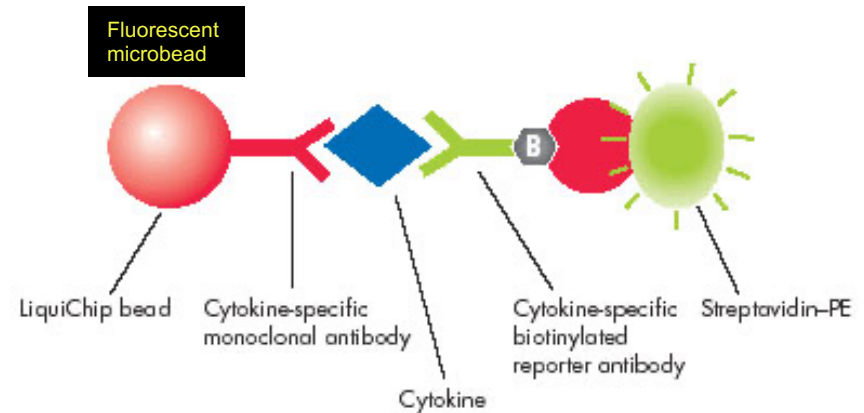
Add 100 μ L SAV-RPE

shake for 30 min. at RT in the dark
wash 3x

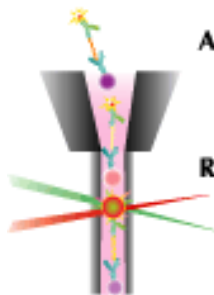
Add 100 μ L Wash Buffer

shake for 30 sec.


Read in LabMap™ System




1. Capture antibody bound to the microbead
2. Reporter antibody




Step 1


 The linked image cannot be displayed. The file may have been moved, renamed or deleted. Verify that the link points to the correct file and location.


Step 2


 The linked image cannot be displayed. The file may have been moved, renamed or deleted. Verify that the link points to the correct file and location.


Step 3


 The linked image cannot be displayed. The file may have been moved, renamed or deleted. Verify that the link points to the correct file and location.

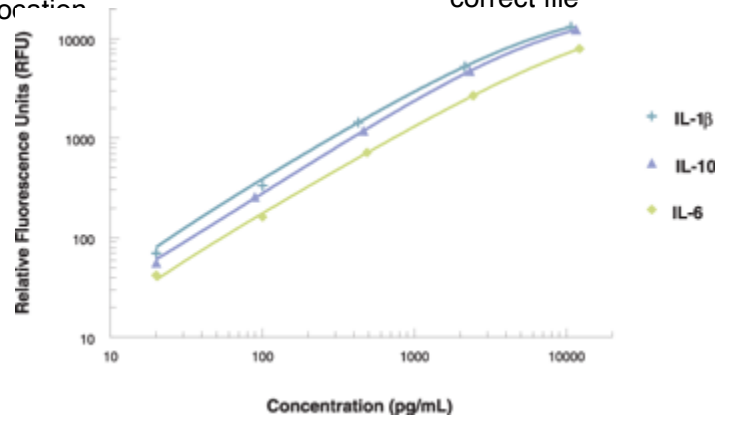
 The linked image cannot be displayed. The file may have been moved, renamed or deleted. Verify that the link points to the correct file and location.

 The linked image cannot be displayed. The file may have been moved, renamed or deleted. Verify that the link points to the correct file and location.

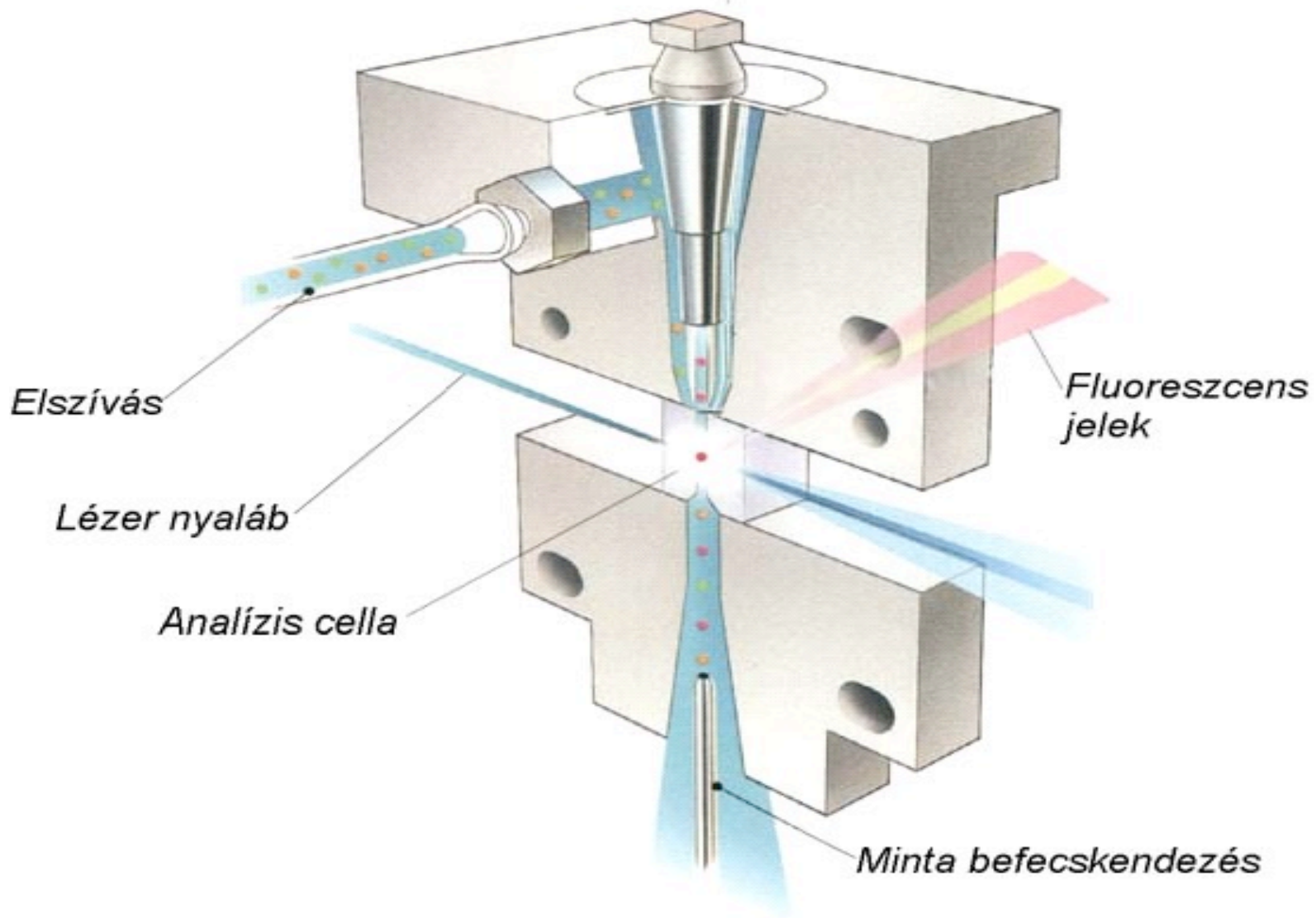
 The linked image cannot be displayed. The file may have been moved, renamed or deleted. Verify that the link points to the correct file and location.

 The linked image cannot be displayed. The file may have been moved, renamed or deleted. Verify that the link points to the correct file and location.

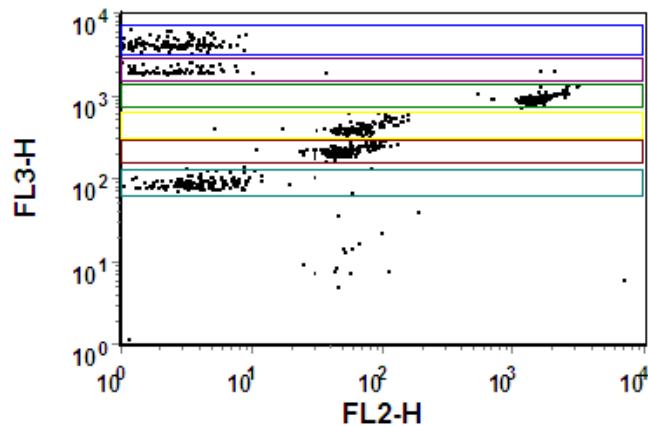
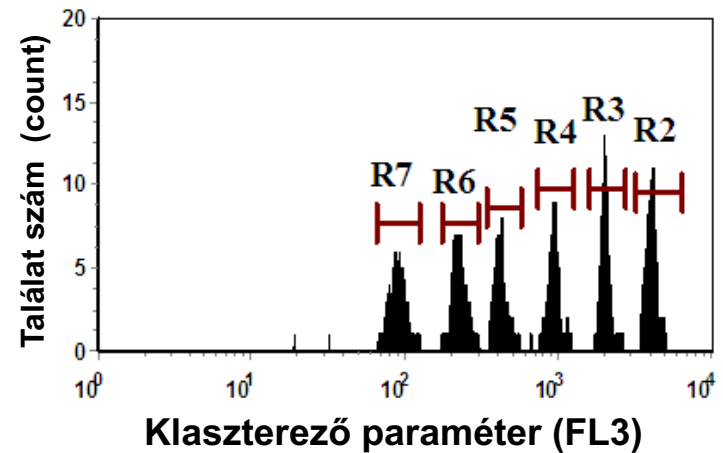
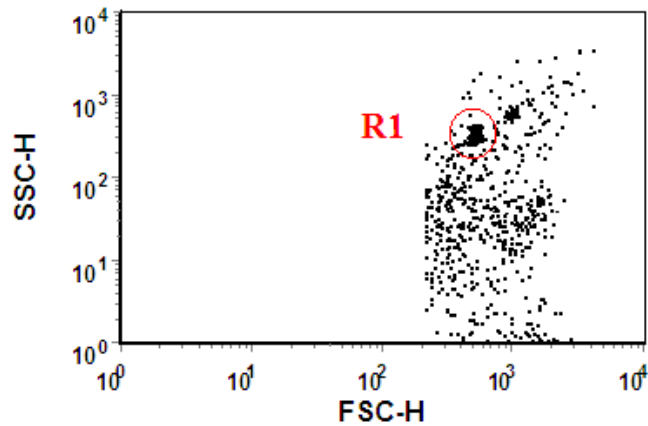
 The linked image cannot be displayed. The file may have been moved, renamed or deleted. Verify that the link points to the correct file and location.



Typical standard curves for IL-1β, IL-10 and IL-6 run simultaneously.



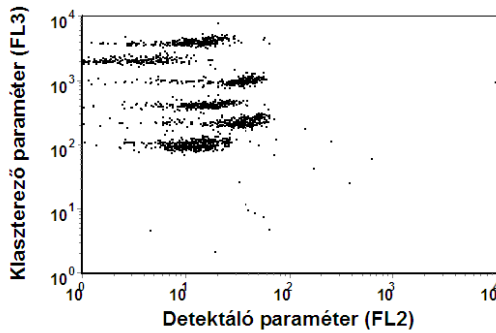
Human inflammatory cytokine bead array - CBA kit



- IL-8
- IL-1 β
- IL-6
- IL-10
- TNF α
- IL-12p70

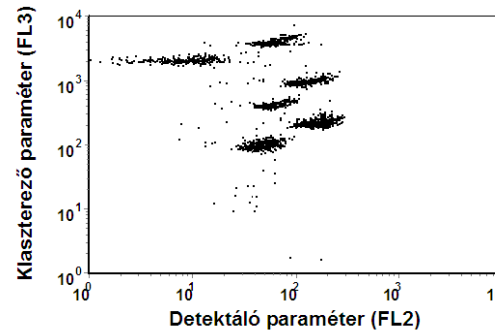
Region #	# of Events	X Geometric Mean	X Arithmetic Mean
None	1201	26.83	322.22
1	1201	26.83	322.22
2	227	1.96	2.38
3	123	2.4	33.11
4	216	1536.98	1596.05
5	201	65.7	69.66
6	236	53.82	56.57
7	175	3.81	5.46

Calculation of standard curve



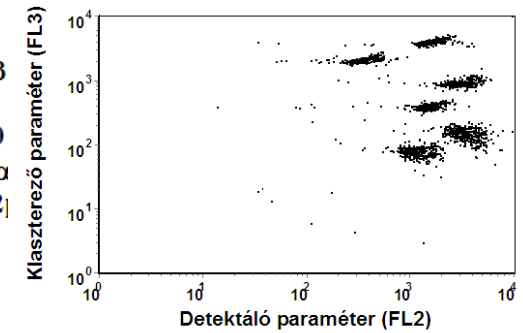
IL-8
IL-1 β
IL-6
IL-10
TNF α
IL-12p7

20 pg/ml

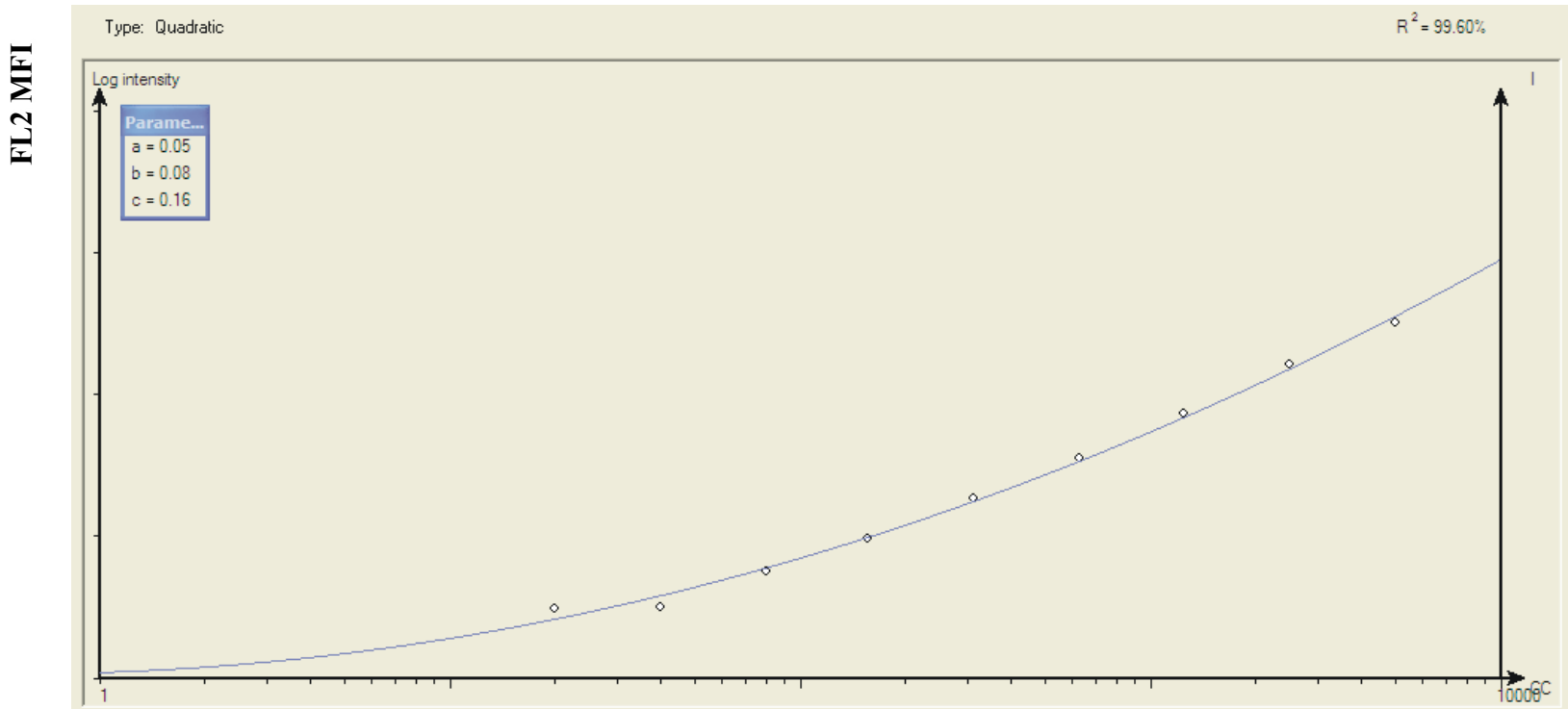


IL-8
IL-1 β
IL-6
IL-10
TNF α
IL-12

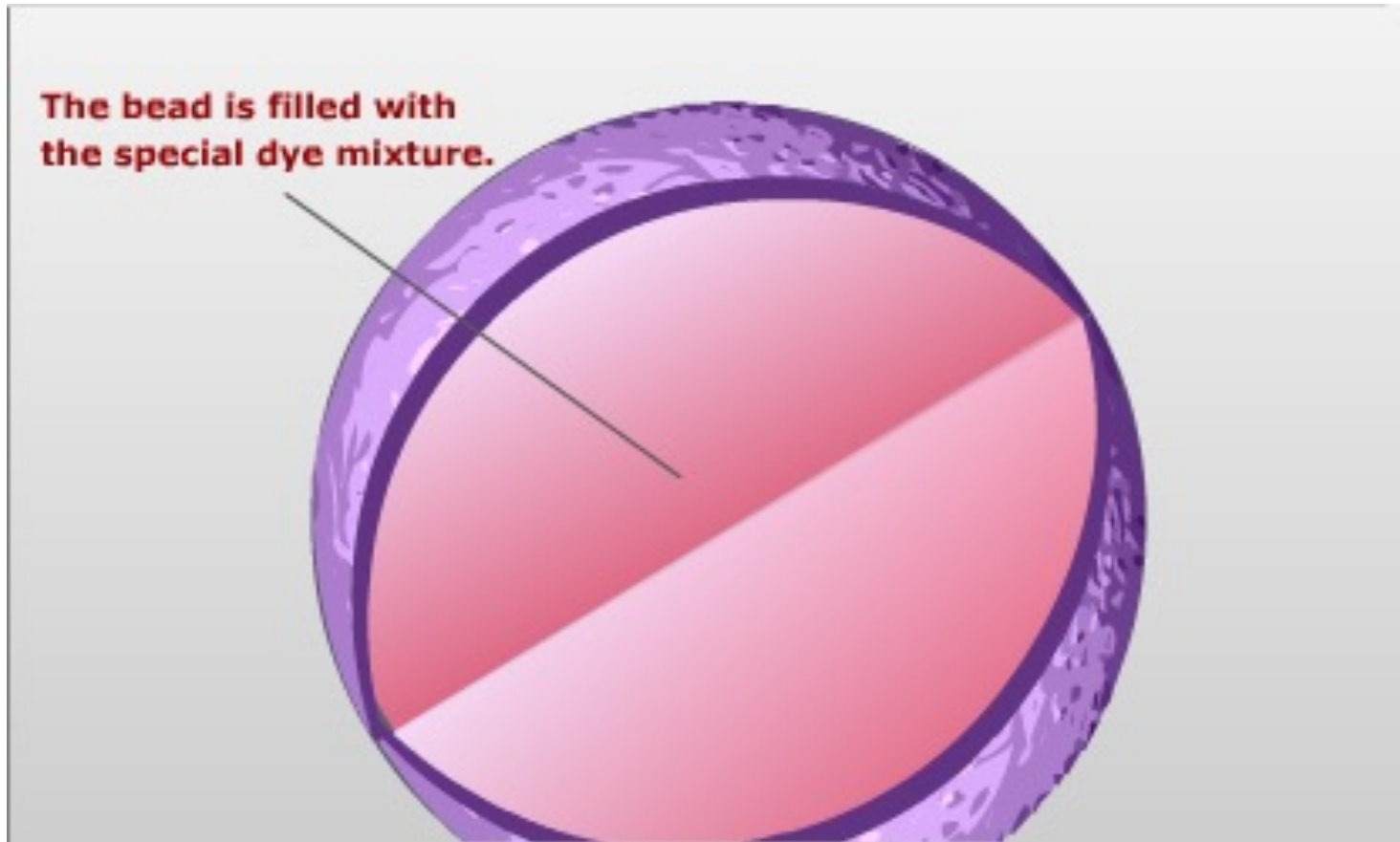
625 pg/ml



5000 pg/ml

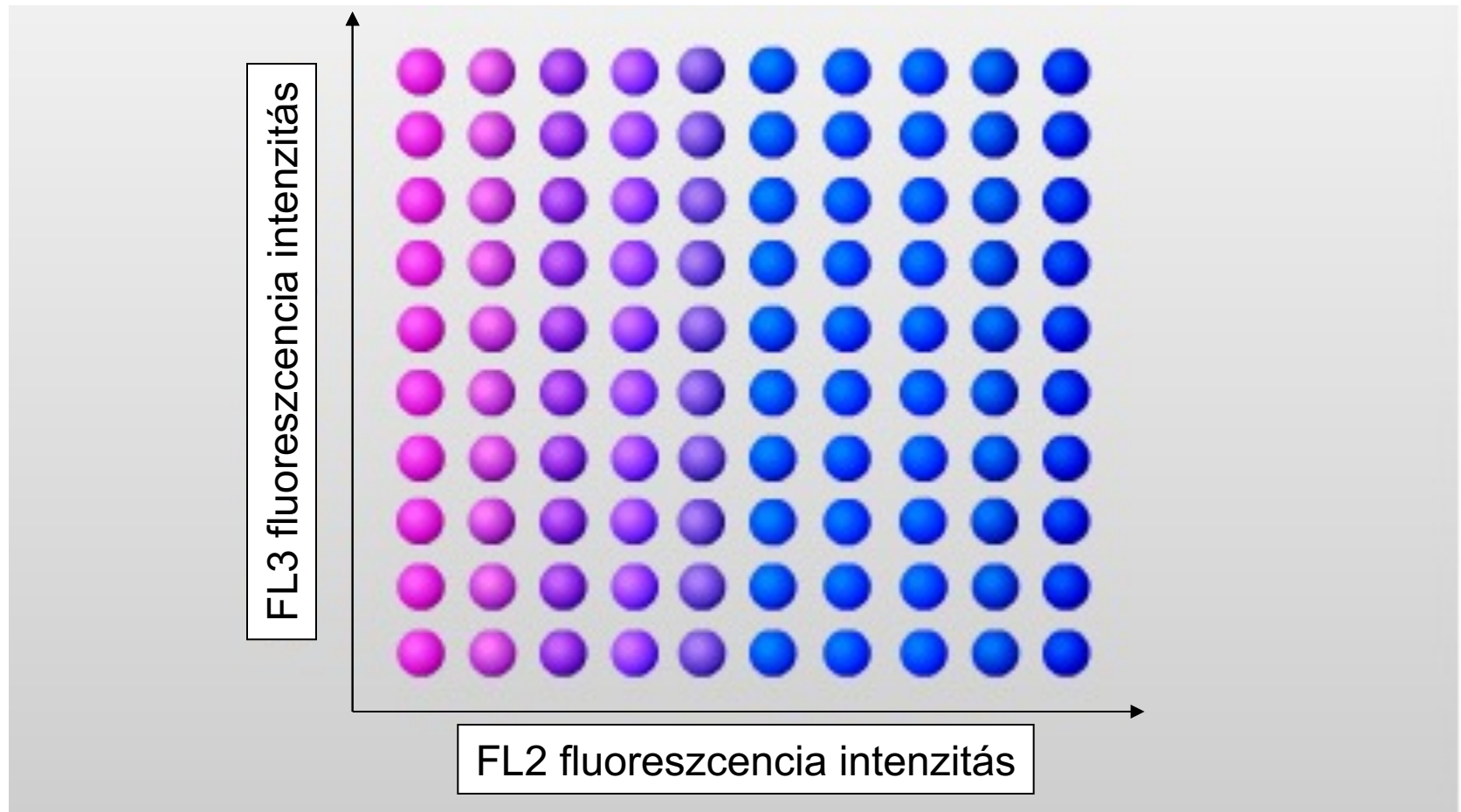


Luminex xMAP technology

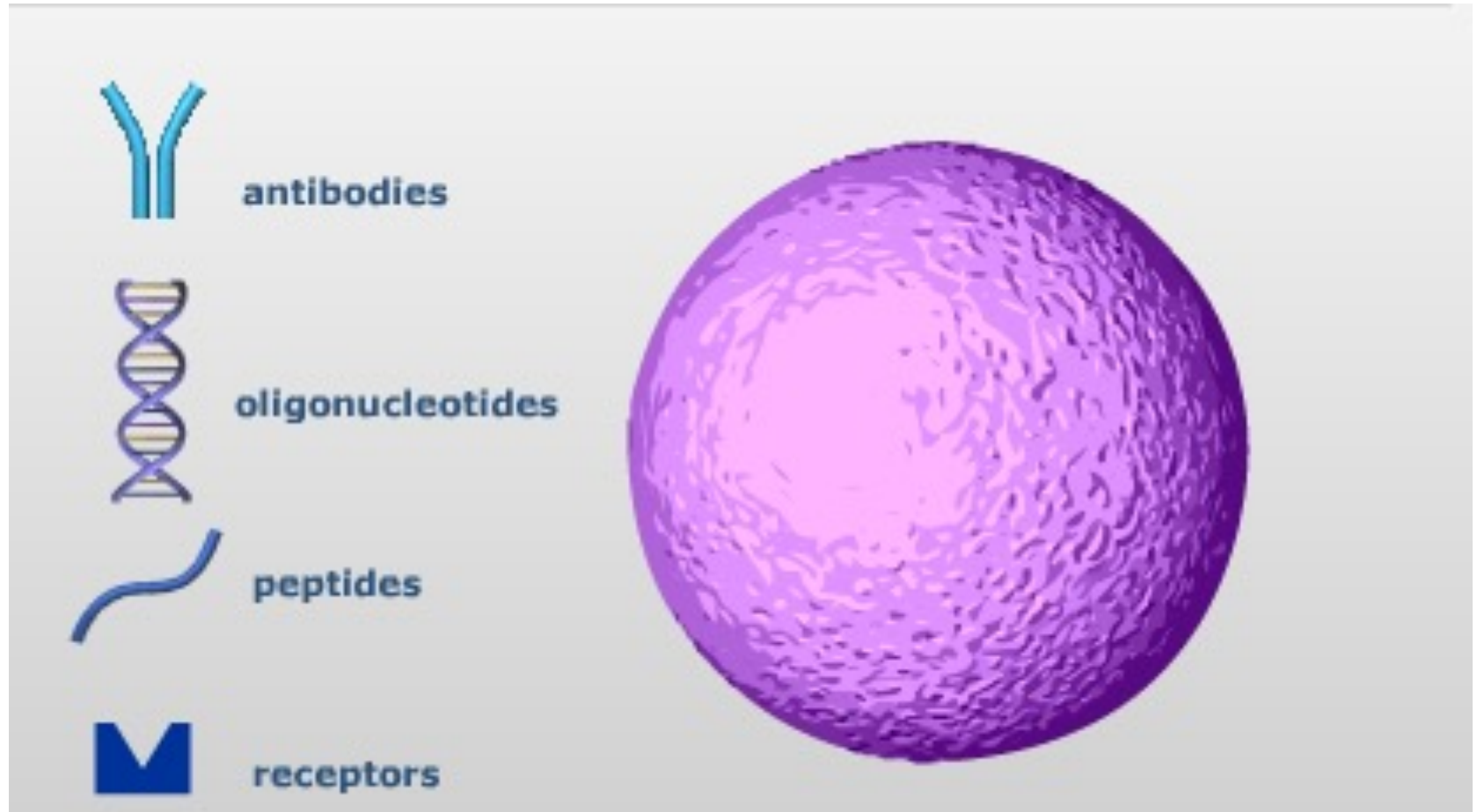


Luminex xMAP technológia

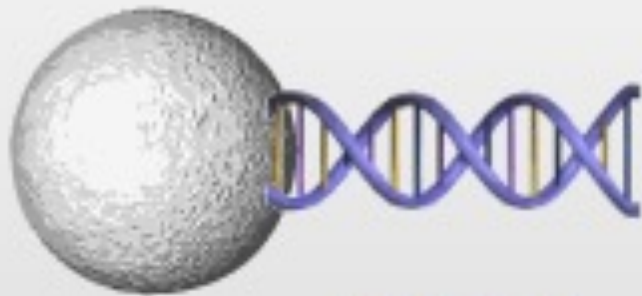
A különböző gyöngy klasztereket össze lehet keverni. Mivel minden egyes gyöngy egyéni felismerési jelet hordoz, az xMAP detekciós rendszer detektálni tudja, hogy melyik gyöngy melyik klaszterhez tartozik. Elméletileg 100 különböző mérést lehet így egyetlen mintában egyszerre elvégezni.



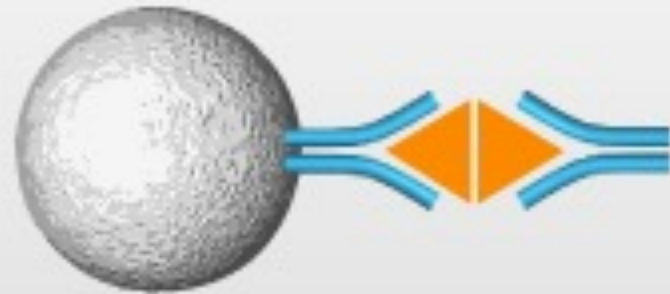
Immobilization of molecules on microbead surface



Covalent binding of different molecules allow measurement of different reactions.



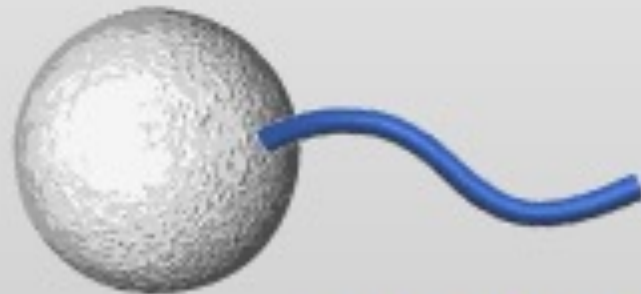
DNA assay



immunoassay

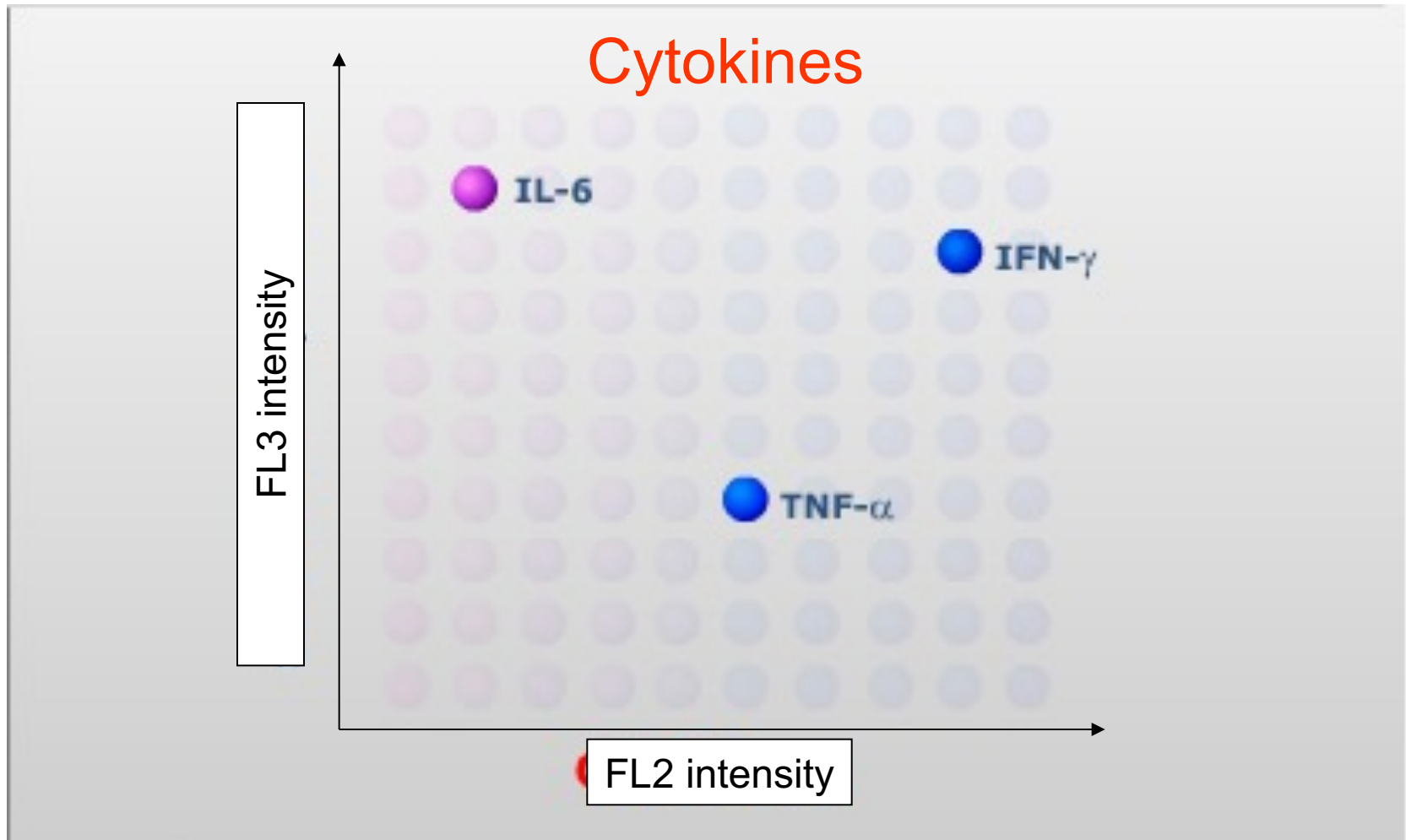


receptor-ligand assay

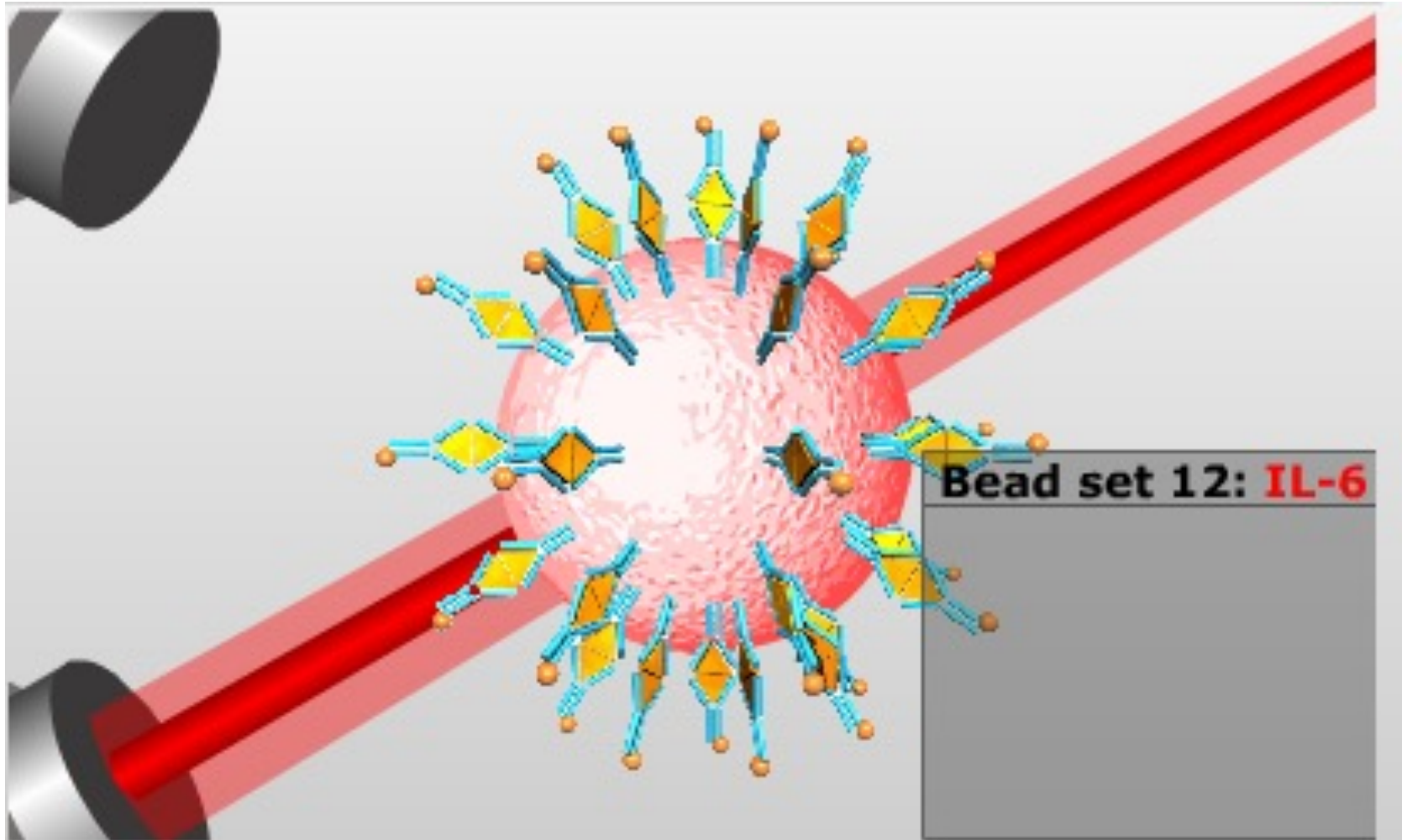


enzyme assay

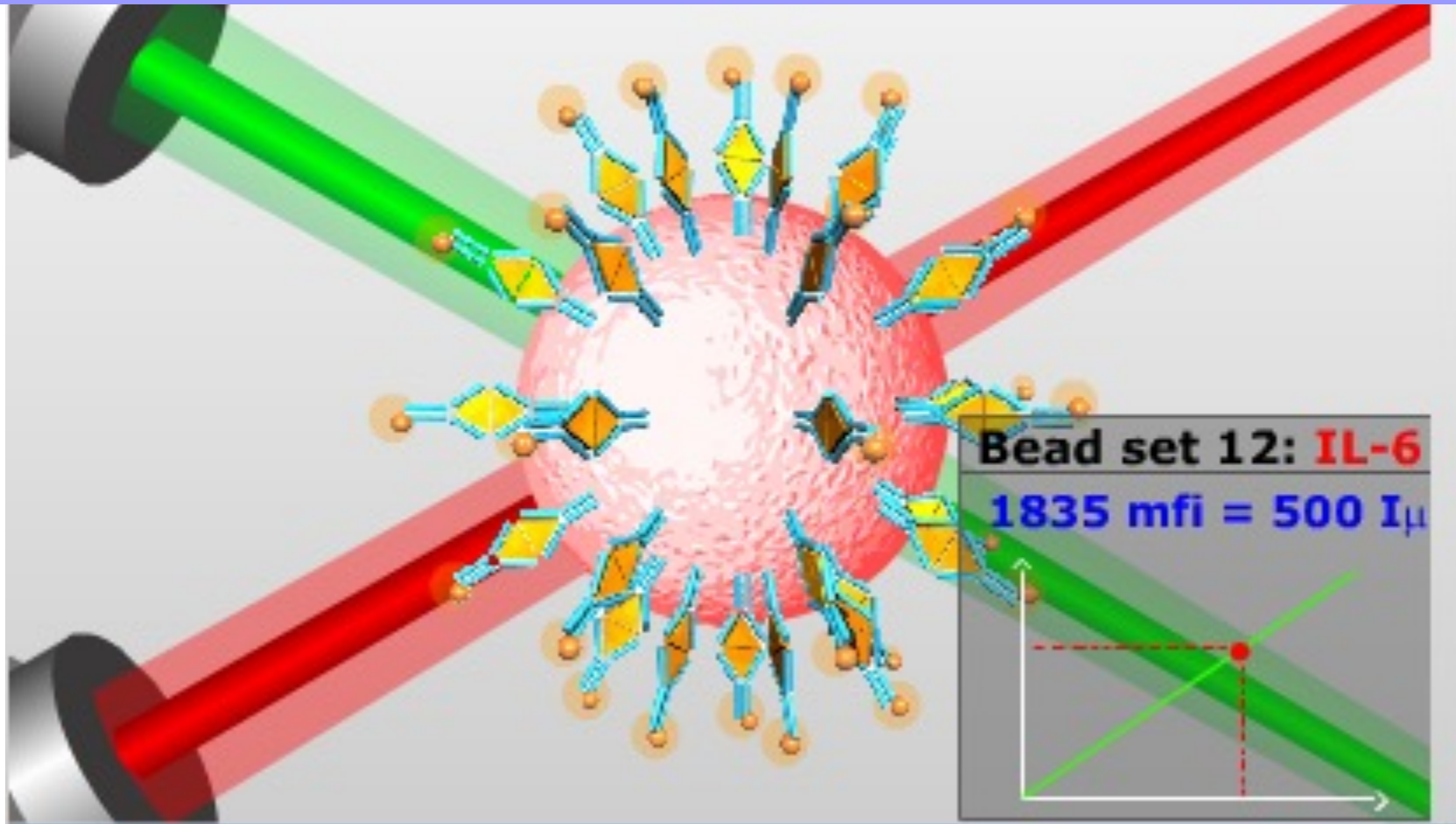
Luminex xMAP technology



Detection fo mikrobead clusters



Detection of reporter fluorescenc



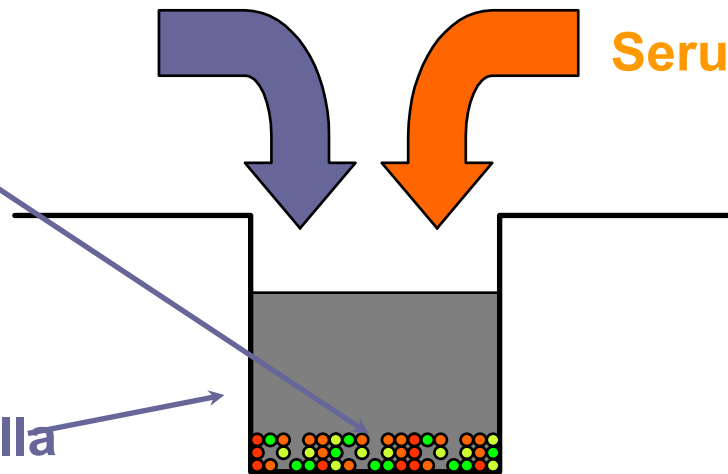
Multiplex Microbead Ass(ay) (MMA)

Reagents:

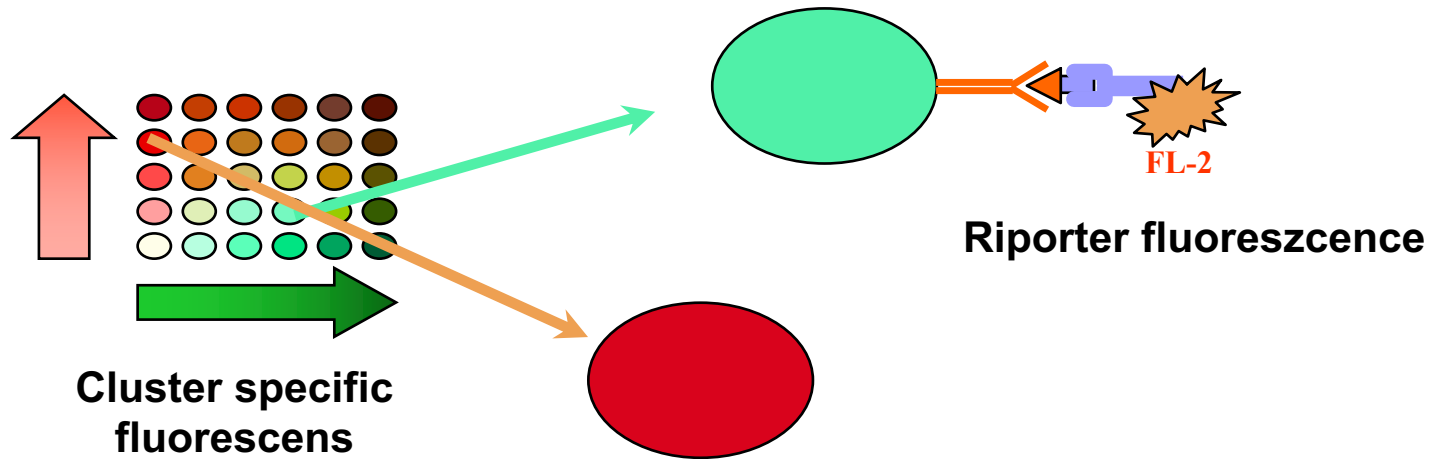
Different
microbeads

Serum sample

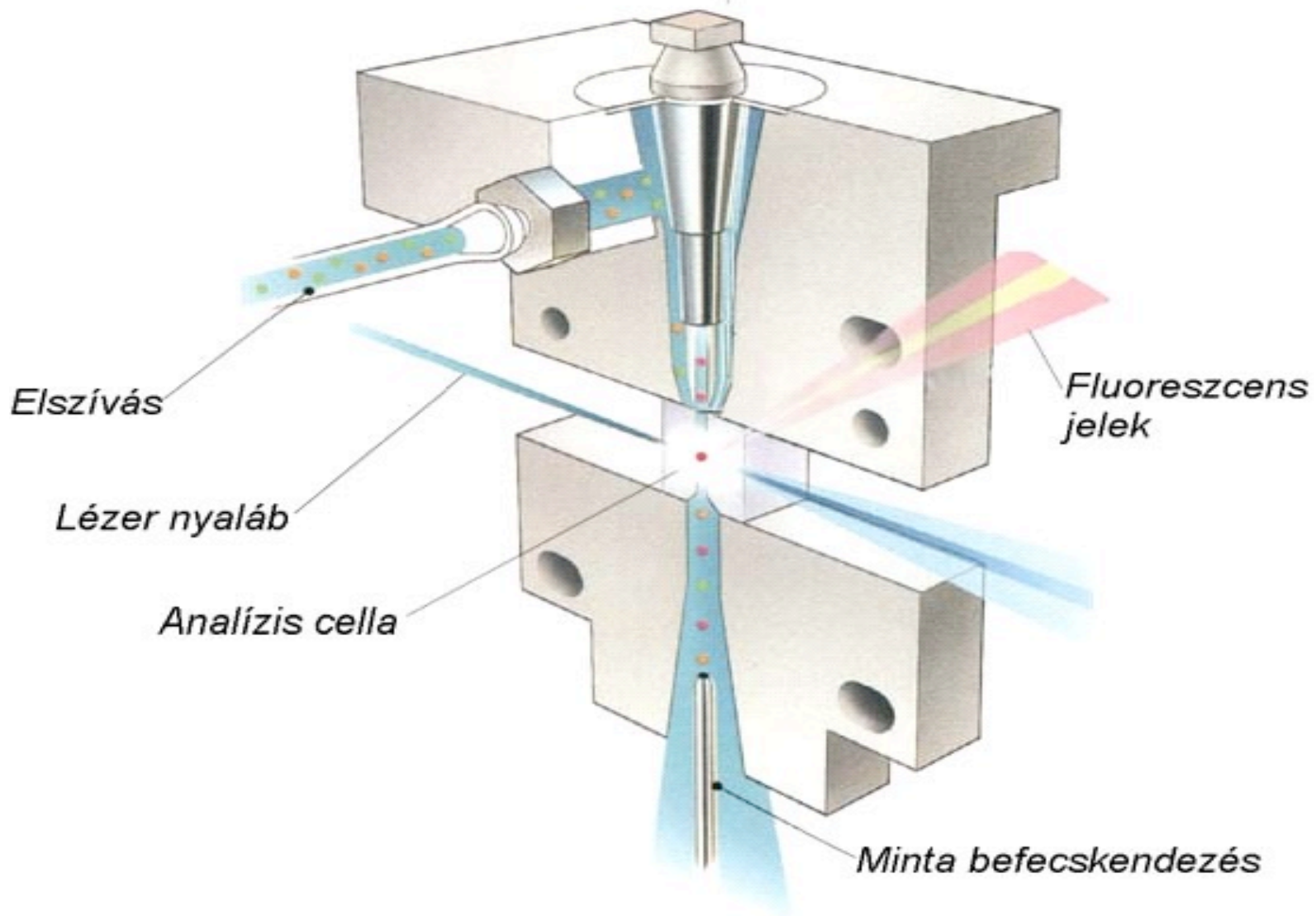
Reakció cella



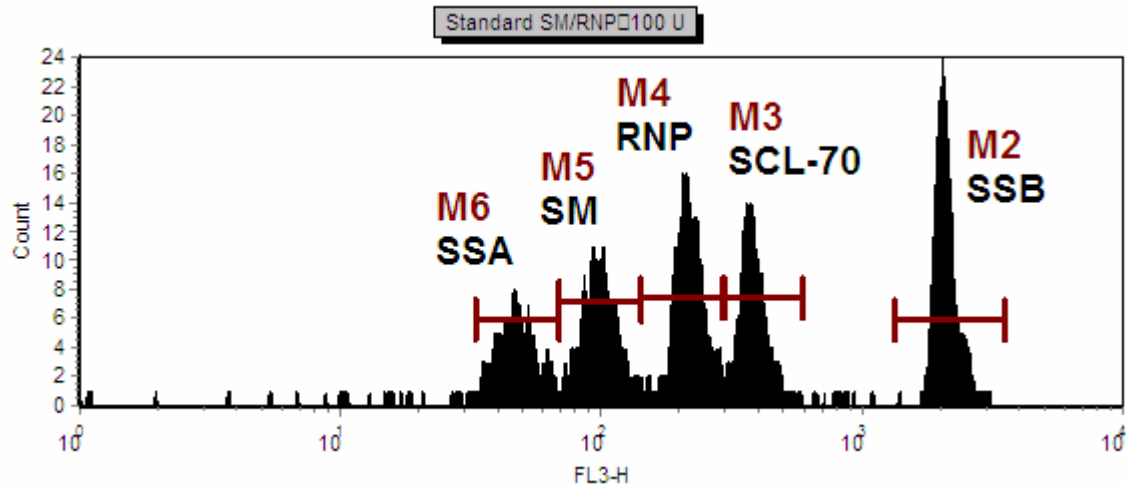
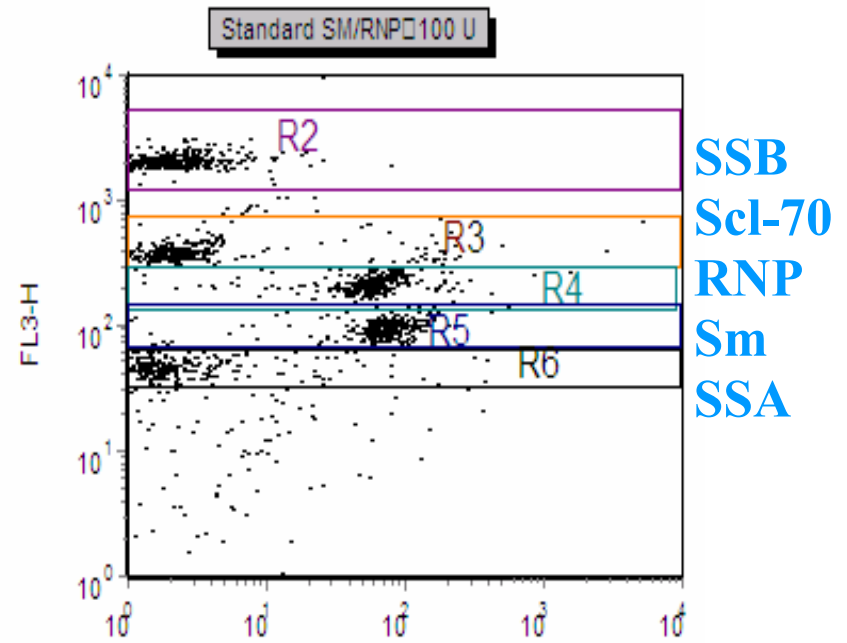
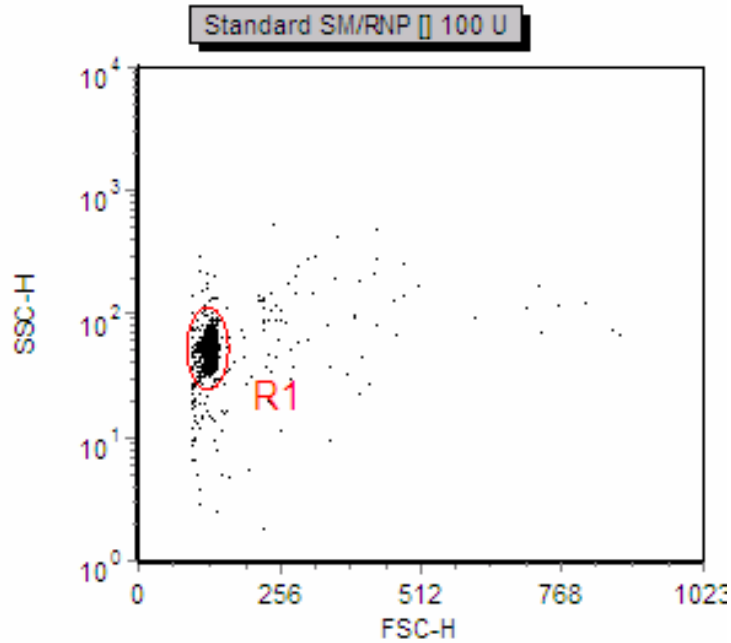
Multiplex Microbead Assay



- Each microbead cluster has its own fluorescence
- Each cluster is specific for a different Aab or cytokine
- Concentration dependent riporter fluorescencence is determined



MMA flow cytometry



PDCA: plan–do–check–act/adjust = Deming cycle

